




MARSHALLWHITE

67 Cole Street
Brighton



Destined for a Brilliant Future

A privileged address and a spacious Edwardian home on 796sqm (approx.) offer exciting potential STCA. One block from Elsternwick Park and near the beach, this north-facing corner location presents a rare opportunity in a prized location. Family spaciousness and original elegance are revealed in three generous living areas, four bedrooms, large study/fifth bedroom, and three bathrooms. Leadlight, fireplaces and bay windows are ready to be paired with a contemporary interior for exclusive living. Cafes around the corner, it's a short walk to Elwood's food stores, and transport and schools are nearby.

67colestreet-brighton.com

5 3 2

Auction Saturday 3rd June at 2.30pm

Jason Collie 0403 191 453

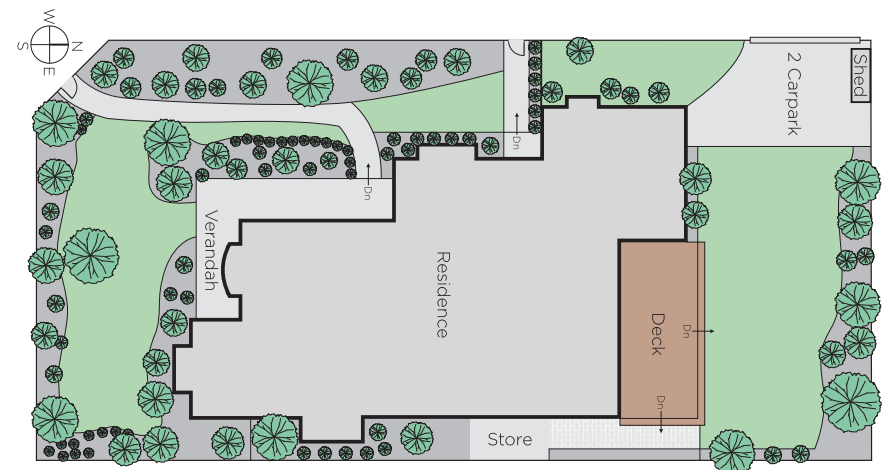
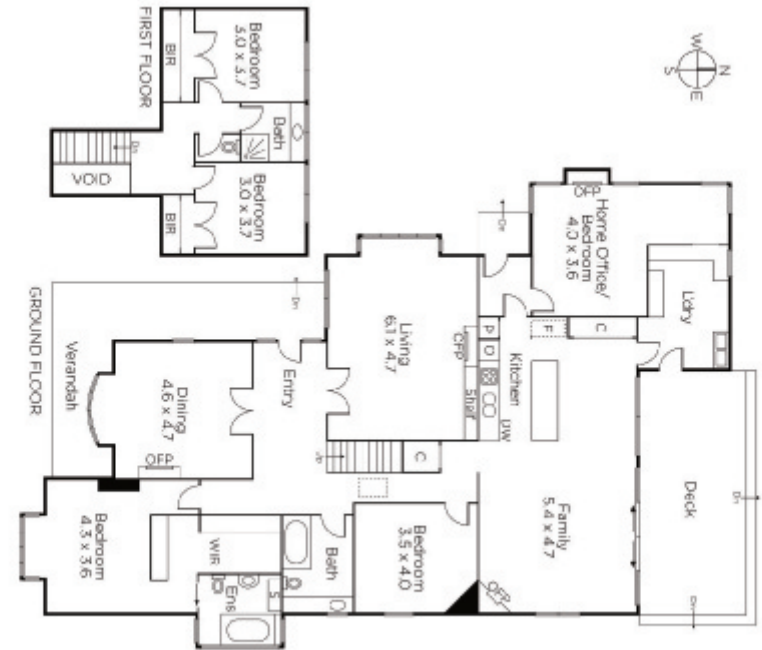
Barb Gregory 0419 568 370

Christine Bajurny 0497 554 547

225 Bay Street Brighton

marshallwhite.com.au


MARSHALLWHITE



Disclaimer: Information provided is believed to be accurate as at the date of printing, no responsibility is taken for any errors or omissions. It is your responsibility to obtain independent, professional advice. Personal information collected from you is for security purposes and to contact you should the property sell prior to auction. We may use this information to provide you with other real estate services including referrals to authorised financial services' providers. Visit our website at www.marshallwhite.com.au for our privacy policy.