



Marcus Chiminello

marcus.chiminello@marshallwhite.com.au
0411 411 271

Nicole French

nicole.french@marshallwhite.com.au
0417 571 505

1111 High Street, Armadale



MARSHALLWHITE

662 Orrong Road,
Toorak



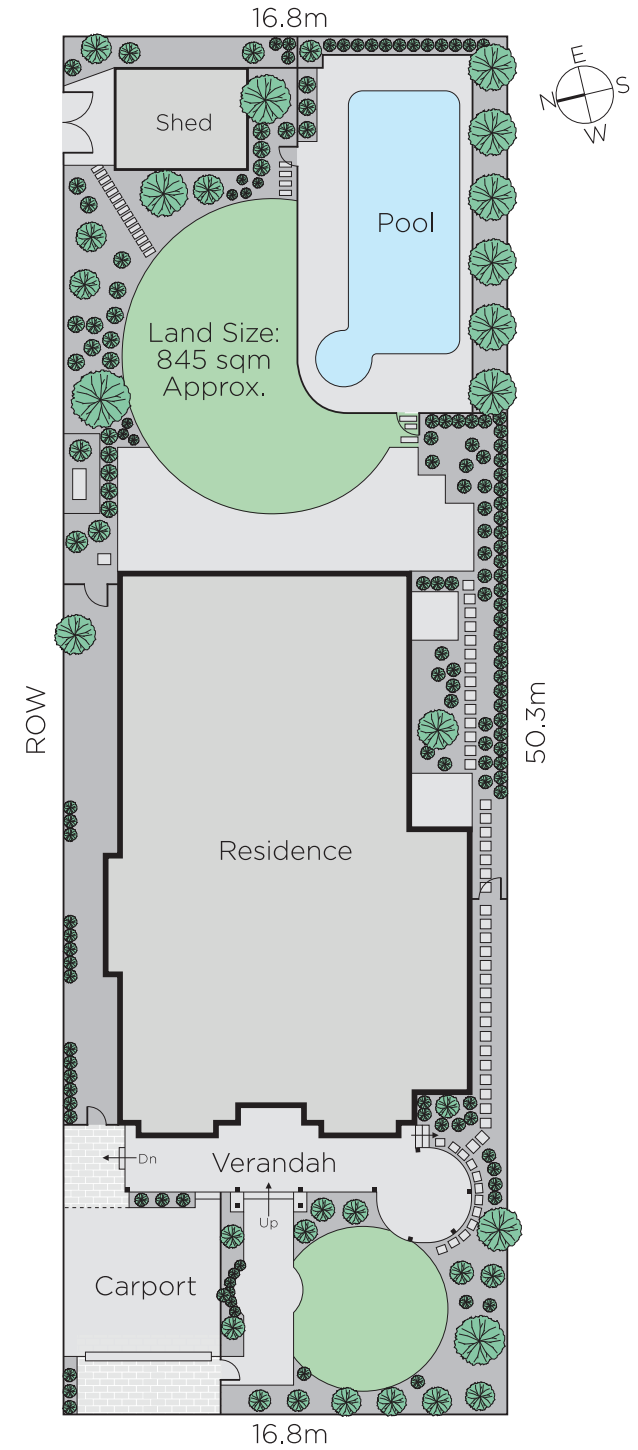
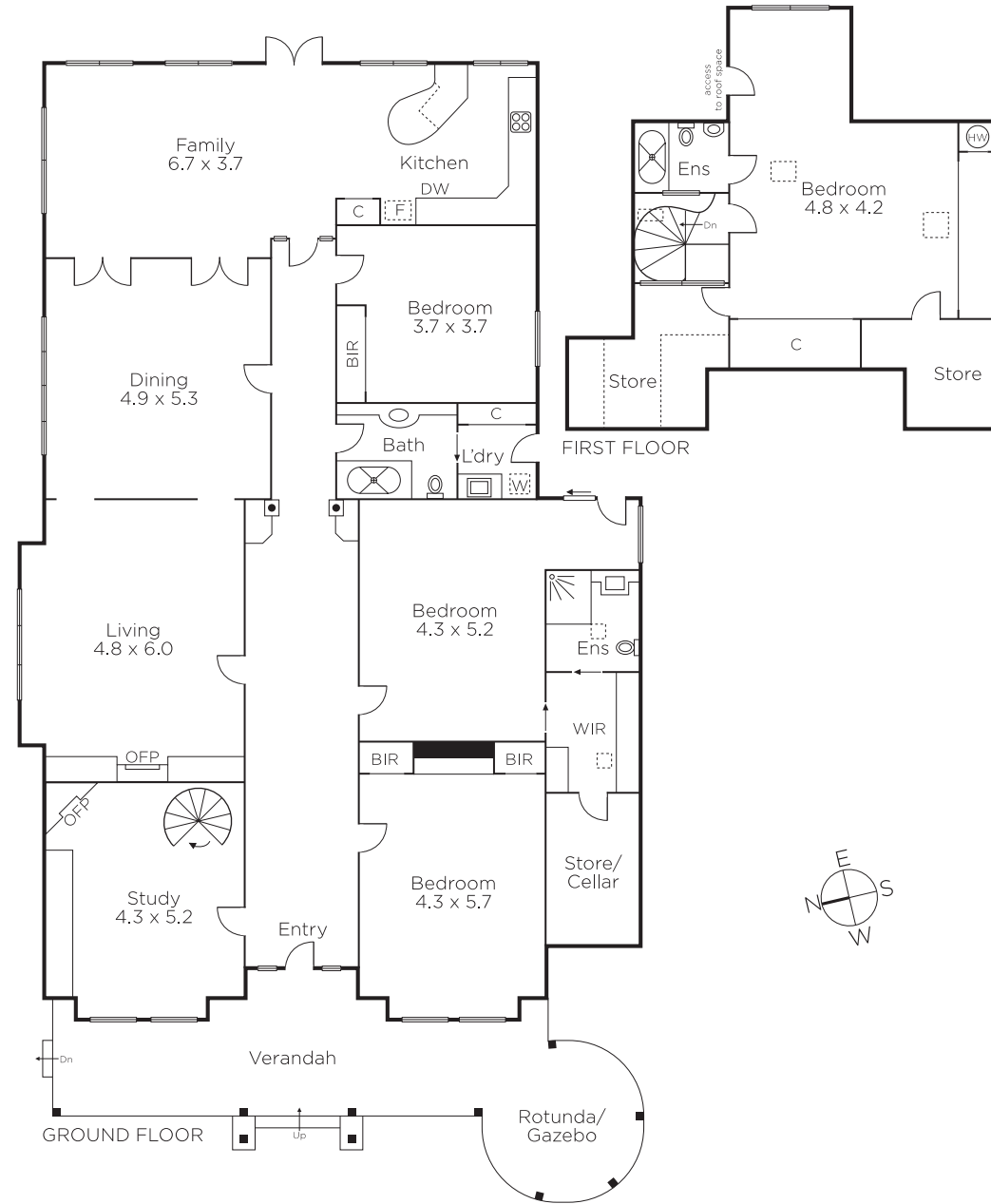
Desirably situated near Toorak and Hawksburn Villages, Beatty Ave shops, Toorak station, Orrong Park and prestige schools, the grandeur & elegance of this magnificent late Victorian residence is matched by a glorious northeast private garden and pool setting. Perfect for immediate family enjoyment, it also offers scope to further update or as a site for a new home or boutique development advantaged by side lane access (STCA). A sweeping verandah with gazebo introduces an arched hallway, sitting room with gas fire & formal dining room, all beneath soaring ceilings. The light-filled living/dining room with a superb stone kitchen opens to the deep private northeast garden with pool. The main bedroom with an en-suite and WIR is complemented by 2 additional BRs with BIRs, bathroom & a refined study with versatile upstairs 4th BR/retreat & bathroom. Includes alarm, refrigerated wine room, laundry, auto sun-awnings, ample storage, large shed & double garage. Land: 845sqm (approx.)

662orrongroad-toorak.com



The light-filled living and dining room with a superb stone kitchen appointed with Miele and Neff appliances.





Disclaimer: Information provided is believed to be accurate as at the date of printing, no responsibility is taken for any errors or omissions. It is your responsibility to obtain independent, professional advice. Personal information collected from you is for security purposes and to contact you should the property sell prior to auction. We may use this information to provide you with other real estate services including referrals to authorised financial services' providers. Visit our website at www.marshallwhite.com.au for our privacy policy.