




MARSHALLWHITE

66 Claremont Avenue
Malvern





Exceptional Scale and Elegance

The impressive proportions, classic elegance and contemporary style showcased by this magnificent solid brick Edwardian residence create an unforgettable domain that responds impeccably to every modern family requirement. In a prized tree-lined precinct, it offers easy access to Malvern Primary, Malvern station and Glenferrie Rd shops and restaurants. Set behind a broad landscaped garden, the traditional arched entrance hall featuring dark timber floors introduces a beautiful sitting room with open fireplace and an exquisite high ceiling. An abundance of family accommodation comprises a glorious main bedroom with open fire, walk in robe and Travertine en-suite, a second bedroom with en-suite and walk in robe, three additional double bedrooms with built in robes and a stylish bathroom. The sleek gourmet Smeg kitchen boasting stone benches, a spacious dining area and an expansive separate living room (open fire) beneath vaulted ceilings open to a private hedged garden. Superbly appointed with alarm, video intercom, ducted vacuum, powder-room, laundry, double garage via rear lane, auto gates and front off street parking. Land size: 922sqm (approx)

66claremontavenue-malvern.com

5  2  4 

Auction Saturday 13th May at 11.30am

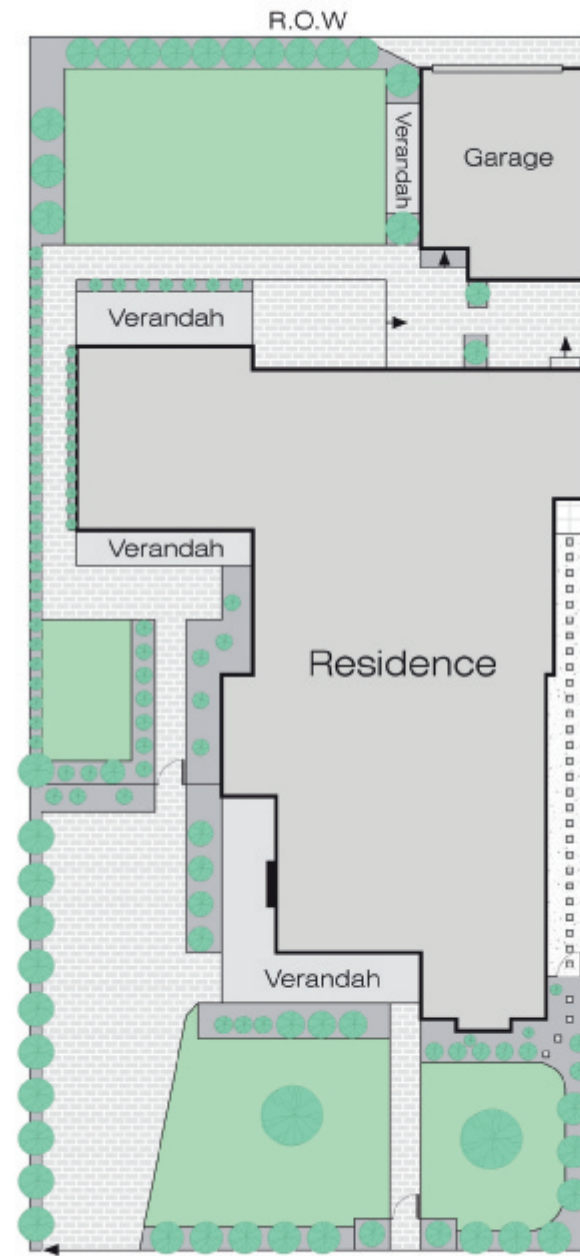
Andrew Hayne 0418 395 349

Fiona Ansell-Jones 0410 325 240

John Manton 0411 444 930

1111 High Street Armadale
marshallwhite.com.au


MARSHALLWHITE



Disclaimer: Information provided is believed to be accurate as at the date of printing, no responsibility is taken for any errors or omissions. It is your responsibility to obtain independent, professional advice. Personal information collected from you is for security purposes and to contact you should the property sell prior to auction. We may use this information to provide you with other real estate services including referrals to authorised financial services' providers. Visit our website at www.marshallwhite.com.au for our privacy policy.