



MARSHALLWHITE

6/58 Wattletree Road
Armadale



Unparalleled Seclusion in Garden Surrounds

Set at the rear of Pelham Court, this secluded town residence presents as a genuine oasis of tranquility. Open-plan living and dining areas complete with well-appointed kitchen combine seamlessly with an elegant zoned dining room and lush courtyard to create an idyllic setting for entertaining. A generous main bedroom features built-in robes and direct access to the central bathroom with shower and bath, with two further light-filled bedrooms/optional study (one with built-in robes) enhancing the options for flexible living. Also includes ample storage, powder room, European laundry, double carport and security system.

6-58wattlereeroad-armadale.com

3 1 2

Auction Saturday 2nd September at 11:30am

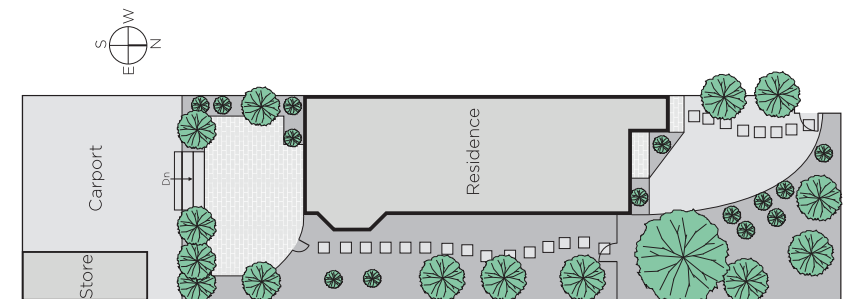
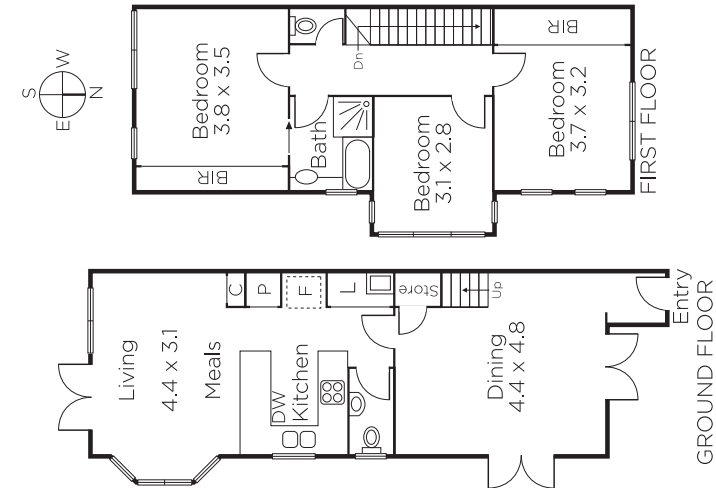
Fraser Cahill 0400 592 572

Bernadette Kiraly 0401 656 052

Richard Mackinnon 0414 822 579

1111 High Street Armadale
marshallwhite.com.au


MARSHALLWHITE



Disclaimer: Information provided is believed to be accurate as at the date of printing, no responsibility is taken for any errors or omissions. It is your responsibility to obtain independent, professional advice. Personal information collected from you is for security purposes and to contact you should the property sell prior to auction. We may use this information to provide you with other real estate services including referrals to authorised financial services' providers. Visit our website at www.marshallwhite.com.au for our privacy policy.