




MARSHALLWHITE

65 Kerferd Street
Malvern East



"Clerahl" Circa 1915s

Situated on one of the smaller land holdings (540 sqm approx) and held by the same family for nearly 50 years, this 1915 solid brick Federation home of 6 principal rooms represents a lifetime opportunity to secure a foothold in the celebrated Gascoigne Estate close to schools, including Malvern Primary, trams, Central Park & Wattletree Village shops and cafes. As neat as a pin, the current room composition presents as formal sitting room, separate dining room, large main bedroom, smaller 2nd bedroom & living room adjacent to a serviceable, older style kitchen. Fabulous northerly orientation at the rear and OSP.

65kerferdstreet-malverneast.com

2 1 2

Auction Saturday 26th August at 10.30am

Hugh Tomlinson 0409 427 483

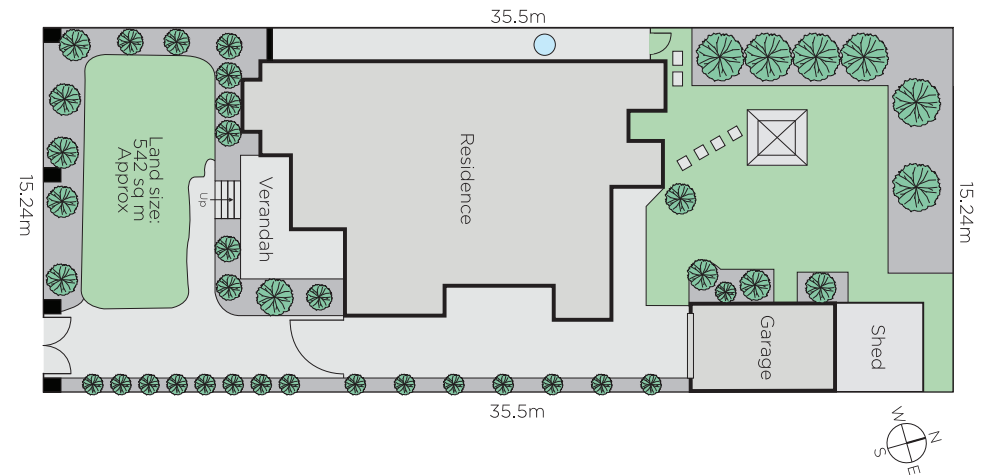
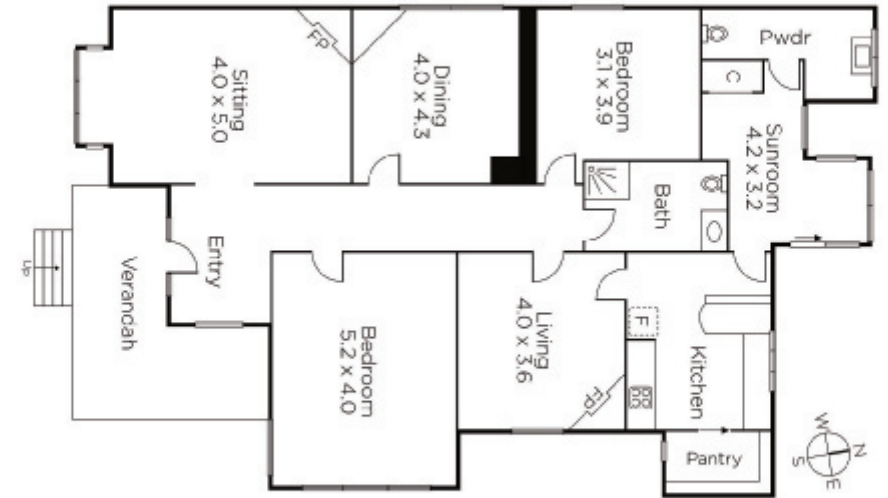
Rae Tomlinson 0418 336 234

James Tomlinson 0408 350 684

1111 High Street Armadale

marshallwhite.com.au


MARSHALLWHITE



Disclaimer: Information provided is believed to be accurate as at the date of printing, no responsibility is taken for any errors or omissions. It is your responsibility to obtain independent, professional advice. Personal information collected from you is for security purposes and to contact you should the property sell prior to auction. We may use this information to provide you with other real estate services including referrals to authorised financial services' providers. Visit our website at www.marshallwhite.com.au for our privacy policy.