



MARSHALLWHITE
ONE

6/48 Oxley Road
Hawthorn



'Oxley': Bold Warehouse-Style Living

Offering a vast open-plan warehouse-style living, this two bedroom apartment is architecturally bold with a superb indoor-outdoor flow and the rare privilege of a communal tennis court. In the popular 'Oxley' building within easy reach of Glenferrie Road's vibrant offerings and public transport. A generous kitchen/meals/living with parquetry floors combine towering ceilings and seamless courtyard connection. The kitchen that is perfect for the home chef and completed by premium appliances, stone benches as well as subway tiles is well-suited for entertaining. The two bedrooms upstairs each with robes share access to one of the home's two renovated bathrooms with additional features including secure intercom entry, two basement parking spaces, reverse cycle air conditioning and a European laundry.

6-48oxleyroad-hawthorn.com



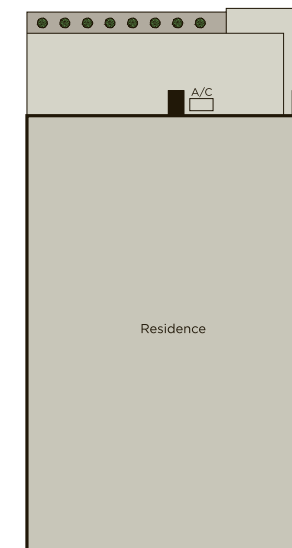
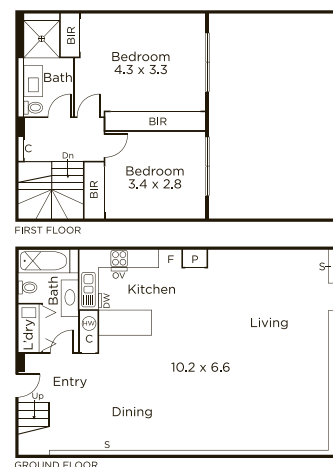
Auction Saturday 2nd March at 10am

Danny See 0402 533 853

Shamit Verma 0401 137 597

801 Glenferrie Road Hawthorn

9822 9999 mwone.com.au



Disclaimer: Information provided is believed to be accurate as at the date of printing, no responsibility is taken for any errors or omissions. It is your responsibility to obtain independent, professional advice. Personal information collected from you is for security purposes to contact you should the property sell prior to auction. We may use this information to provide you with other real estate services including referrals to authorized financial services providers. Visit our website at www.mwone.com.au for our privacy policy.