



PARK MANSIONS

64b


MARSHALLWHITE
ONE

6/41 Park Street
South Yarra



‘Park Mansions’: Walk to the Botanic Gardens

A beautifully crafted two bedroom apartment that is perfectly positioned for a sophisticated South Yarra lifestyle, this substantial, light-filled residence is just metres from the Botanic Gardens. This up-lifting residence promises outstanding lifestyle appeal and ticks all the boxes for an investment of enduring market appeal. The home’s lounge/ dining enjoys a lovely northern orientation and glimpses of the city skyline as it presents a smart living space that is removed from the updated kitchen/meals. Each of the bedrooms is generous - one with huge robes - whilst the bathroom has laundry facilities. Also features new carpets throughout and access to off-street parking (not on title). This blue ribbon location is just moments from the heart of the city and delivers you the rare ability to walk to the Botanic Gardens, indulge in some superb cafes, restaurants and bars, wander down to Toorak Rd or jump on the Number 58 tram to the city.

6-41parkstreet-southyarra.com

2 1

Auction Saturday 18th November at 1.30pm

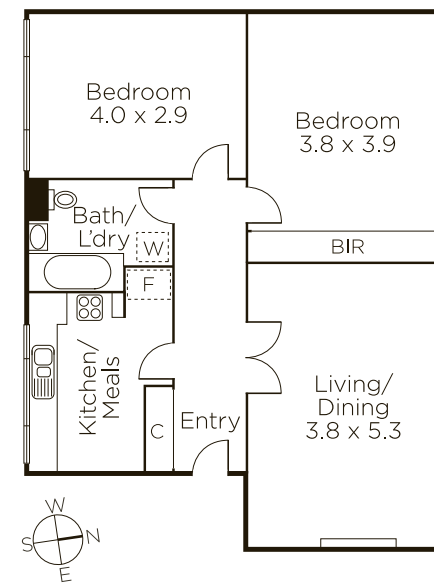
Joseph Ben-Danan 0408 135 948

Matt Giulieri 0407 851 206

Jack Nicol 0400 774 428

1111 High Street Armadale

9822 9999 mwone.com.au



MARSHALLWHITE
ONE

Disclaimer: Information provided is believed to be accurate as at the date of printing, no responsibility is taken for any errors or omissions. It is your responsibility to obtain independent, professional advice. Personal information collected from you is for security purposes to contact you should the property sell prior to auction. We may use this information to provide you with other real estate services including referrals to authorized financial services providers. Visit our website at www.mwone.com.au for our privacy policy.