




MARSHALLWHITE
ONE

6/361 Church Street
Richmond



City Views and Transcendent Living

The ideal first home or striking investment, relish the opportunity to live in this convenient Richmond apartment with significant lifestyle benefits.

Walk to Swan Street or Bridge Road to one of the many local cafes, eat out at a diverse range of restaurants, enjoy the buzz of live entertainment, or catch the tram with ease into Melbourne's sporting precinct and the CBD. Renovated throughout and positioned on the top floor blessed with tree-top views across to the city skyline, appreciate the comfort of the sun-splashed living/meals with balcony, the kitchen with stone benches and stainless steel appliances, reverse cycle heating/cooling and the modern white bathroom with laundry facilities off the double bedroom. Solid brick construction ensures peace and quiet, while a single car space adds convenience.

6-361churchstreet-richmond.com

1 1 1

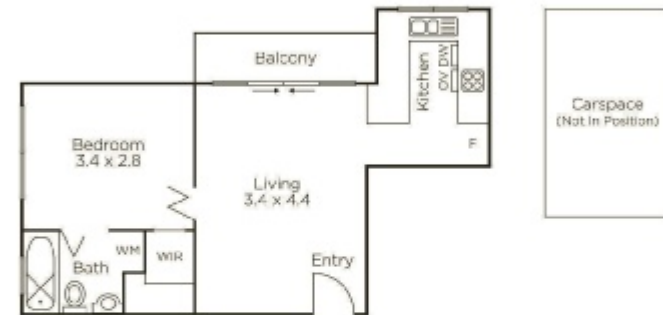
Auction Saturday 30th November at 12.30pm

Tom Hayne 0429 149 070

1111 High Street Armadale

Kane Penhalluriack 0406 556 445

9822 9999 mwone.com.au



MARSHALLWHITE
ONE

Disclaimer: Information provided is believed to be accurate as at the date of printing, no responsibility is taken for any errors or omissions. It is your responsibility to obtain independent, professional advice. Personal information collected from you is for security purposes to contact you should the property sell prior to auction. We may use this information to provide you with other real estate services including referrals to authorized financial services' providers. Visit our website at www.mwone.com.au for our privacy policy.