




MARSHALLWHITE
ONE

6/3 High Road
Camberwell



Divine Light-filled Tranquility

Incredibly tranquil and surrounded by lovely leafy outlooks, this spacious and light-filled, two bedroom residence is privately tucked-away and enjoys an al fresco flow to its north-facing entertainers' size courtyard.

A streamlined renovation sees a stone-benched kitchen with premium stainless steel appliances flow easily to a large lounge with dining area leading out to the paved courtyard which is surrounded by lush greenery. Both bedrooms are generously proportioned with built in robes whilst the semi ensuite bathroom is renovated. Also features reverse cycle air conditioning, ceiling fans and remote lock up garage.

Close to Burke Rd trams and around the corner from both Camberwell Junction and Tooronga Village, this home offers first class access to shopping, cafes, restaurants, public transport and the freeway.

6-3highroad-camberwell.com



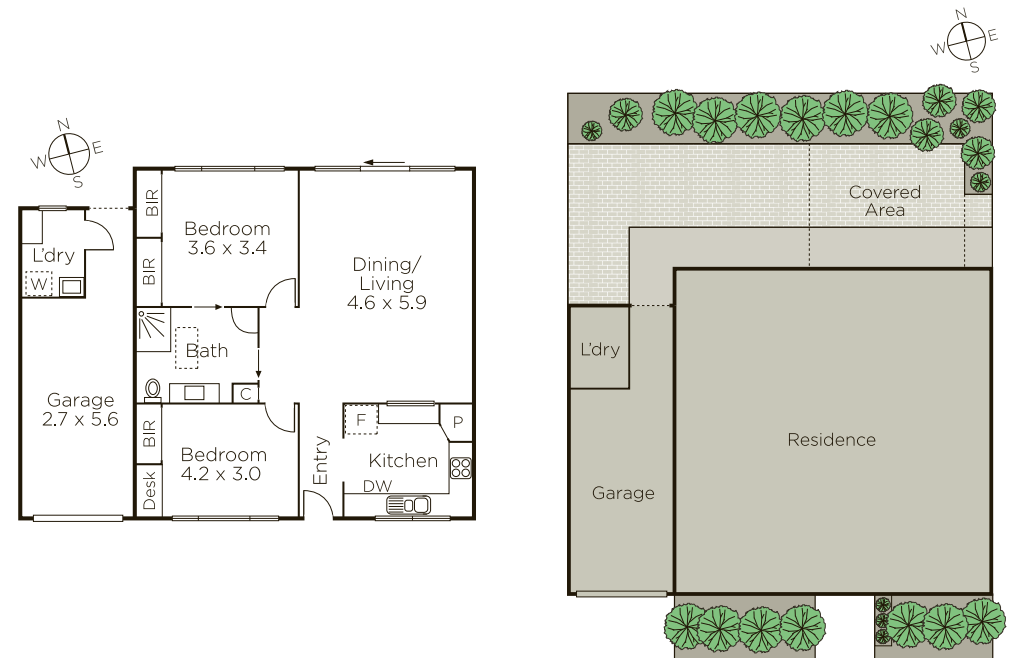
Auction Saturday 12th May at 11.30am

Danny See 0402 533 853

Monica Rezk 0413 596 342

801 Glenferrie Road Hawthorn

9822 9999 mwone.com.au




MARSHALLWHITE
ONE

Disclaimer: Information provided is believed to be accurate as at the date of printing, no responsibility is taken for any errors or omissions. It is your responsibility to obtain independent, professional advice. Personal information collected from you is for security purposes to contact you should the property sell prior to auction. We may use this information to provide you with other real estate services including referrals to authorized financial services' providers. Visit our website at www.mwone.com.au for our privacy policy.