



62^A


MARSHALLWHITE

62a Coppin Street
Malvern East



Deco Allure in the Gascoigne Estate

The evocative period charm, inspired contemporary style and generous dimensions that define this stunning single level Art Deco residence deliver instant family appeal in the coveted Gascoigne Estate near Central Park, trams, shops and schools. Behind the charming façade, timber floors flow through the entrance hall to a gorgeous sitting room (gas fire), 3 beautiful bedrooms and 2 stylish bathrooms. The light filled dining area, new gourmet stone kitchen and generous living room open to a covered BBQ terrace and deep private garden with heated pool. Includes alarm, Euro-laundry, irrigation and carport.

62acoppinstreet-malverneast.com

3 2 2

Auction Saturday 24th June at 1.30pm

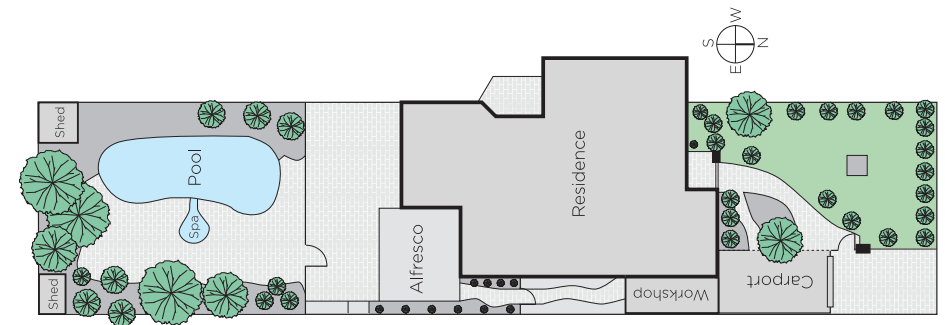
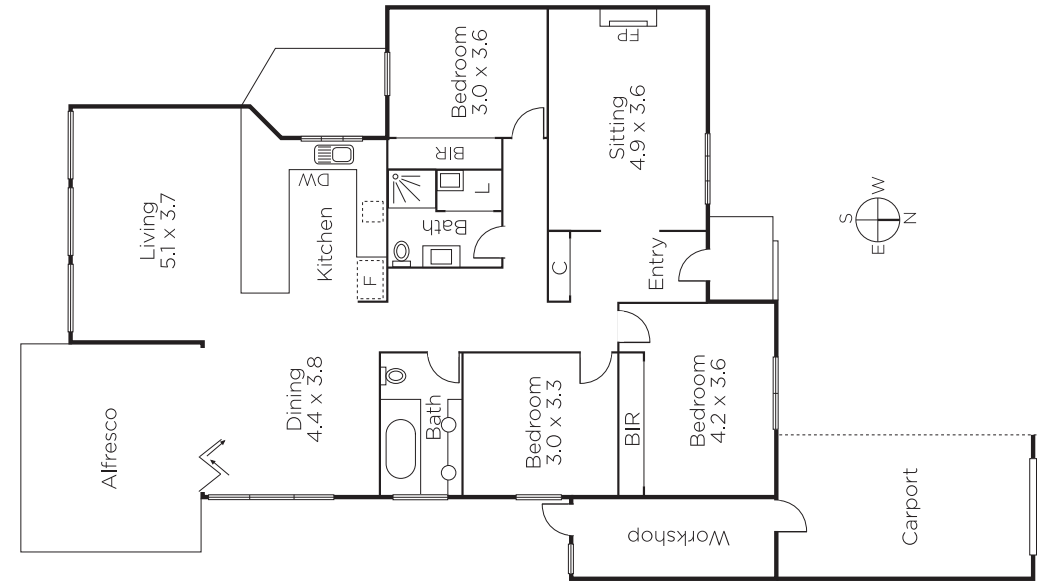
Hugh Tomlinson 0409 427 483

Celeste Wright 0413 309 002

James Tomlinson 0408 350 684

1111 High Street Armadale
marshallwhite.com.au

MARSHALLWHITE



Disclaimer: Information provided is believed to be accurate as at the date of printing, no responsibility is taken for any errors or omissions. It is your responsibility to obtain independent, professional advice. Personal information collected from you is for security purposes and to contact you should the property sell prior to auction. We may use this information to provide you with other real estate services including referrals to authorised financial services' providers. Visit our website at www.marshallwhite.com.au for our privacy policy.