



MARSHALLWHITE  
ONE

62/4 Sydney Street  
Prahran



## Panoramic City Views, Chic 60s Glamour

In a league of its own, this huge, two bedroom older-style apartment is one of a kind, combining 1960s chic with breath-taking views to the city skyline. Exceeding expectations, the home is instantly awe-inspiring with a vast north-oriented lounge / dining opening to a sunroom and city views, while the kitchen / meals features stone benches, mirrored splash backs and more views across Toorak Park. Each of the bedrooms is huge with robes, the master with ensuite, whilst there is a second bathroom, powder room and laundry. Importantly, the home is accessed securely via video entry and an elevator, whilst also offering the rare prize of its own double lock-up garage. Moments from Orrong Park, Beatty Avenue, Rose Street Village, High Street Trams & Toorak Railway Station.

62-4sydneystreet-prahran.com

2 2 2

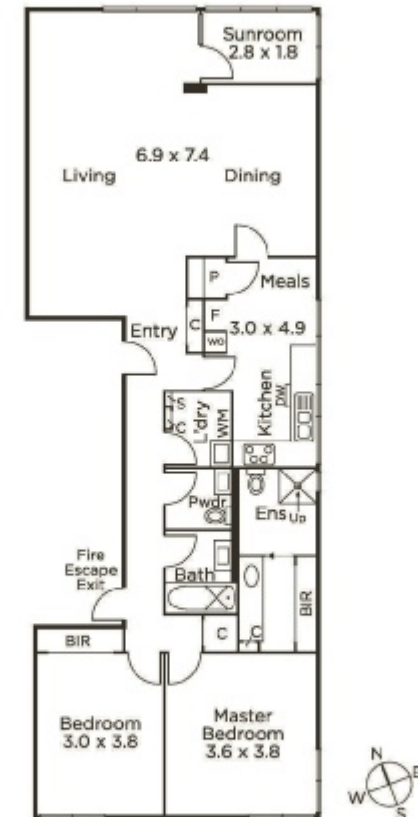
Auction Saturday 16th February at 9.30am

Joseph Ben-Danan 0408 135 948

1111 High Street Armadale

Jack Nicol 0400 774 428

9822 9999 mwone.com.au



MARSHALLWHITE  
ONE

Disclaimer: Information provided is believed to be accurate as at the date of printing, no responsibility is taken for any errors or omissions. It is your responsibility to obtain independent, professional advice. Personal information collected from you is for security purposes to contact you should the property sell prior to auction. We may use this information to provide you with other real estate services including referrals to authorized financial services providers. Visit our website at [www.mwone.com.au](http://www.mwone.com.au) for our privacy policy.