



MARSHALLWHITE
ONE

6/14 Illawarra Road
Hawthorn



Renovated Delight in the Scotch Hill Precinct

Privately situated at the rear of an established complex this first floor apartment offers an outstanding opportunity for first home buyers, young couples or shrewd investors seeking entry into the Hawthorn market; with its value and future appreciation prospects underpinned by its excellent location in a quiet tree lined street in the highly regarded Scotch Hill precinct. Close to shopping and dining options, Swinburne University, parklands and transport. The crisp white interior features contemporary timber floors through a living and dining room opening to a sun-drenched balcony, two good-sized bedrooms with BIRs, a stylish stone/Euro S/S kitchen and concealed laundry plus a pristine renovated bathroom. Other features include a communal outdoor entertaining area, R/C air conditioner (living), Nobo Wall Heaters, secure intercom entry with auto gates and off-street parking.

6-14illawarraroad-hawthorn.com

2 1 1

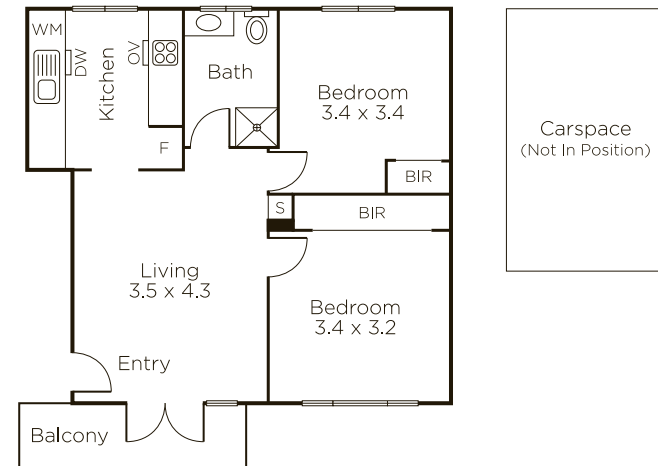
Auction Saturday 14th December at 12.30pm

Samantha Paterson 0417 137 721

801 Glenferrie Road Hawthorn

Danny See 0402 533 853

9822 9999 mwone.com.au



MARSHALLWHITE
ONE

Disclaimer: Information provided is believed to be accurate as at the date of printing, no responsibility is taken for any errors or omissions. It is your responsibility to obtain independent, professional advice. Personal information collected from you is for security purposes to contact you should the property sell prior to auction. We may use this information to provide you with other real estate services including referrals to authorized financial services providers. Visit our website at www.mwone.com.au for our privacy policy.