



117 Rouse


MARSHALLWHITE

6/117 Rouse Street
Port Melbourne





Exceptional Warehouse Conversion

The showpiece in the ZINC warehouse conversion, this absolutely stunning residence brilliantly combines inspired architectural design with original industrial character to create a spectacular indoor-outdoor bayside sanctuary. A private forecourt with tranquil fishpond creates a serene first impression. Inside, solid oak floors and high ceilings distinguish the exceptionally generous living and dining areas that surround the premium marble Ilve kitchen. A series of bi-fold doors and windows open the living spaces to a large bluestone courtyard with BBQ and pizza oven, set around the base of the soaring original factory chimney. Two spacious bedrooms with designer en-suites and robes and a study nook are upstairs. On the third level, two additional double bedrooms with built in robes, north-facing balcony, stylish bathroom and second living zone enjoy beach views. Enviably situated metres from the beach, Bay St shops and restaurants, Gasworks Park and schools, this unique residence also includes hydronic heating, RC/air-conditioning, powder-room, laundry, attic storage and 4 side by side basement car-spaces.

6-117rousestreet-portmelbourne.com

4  3  4 

Auction Saturday 1st April at 12.30pm

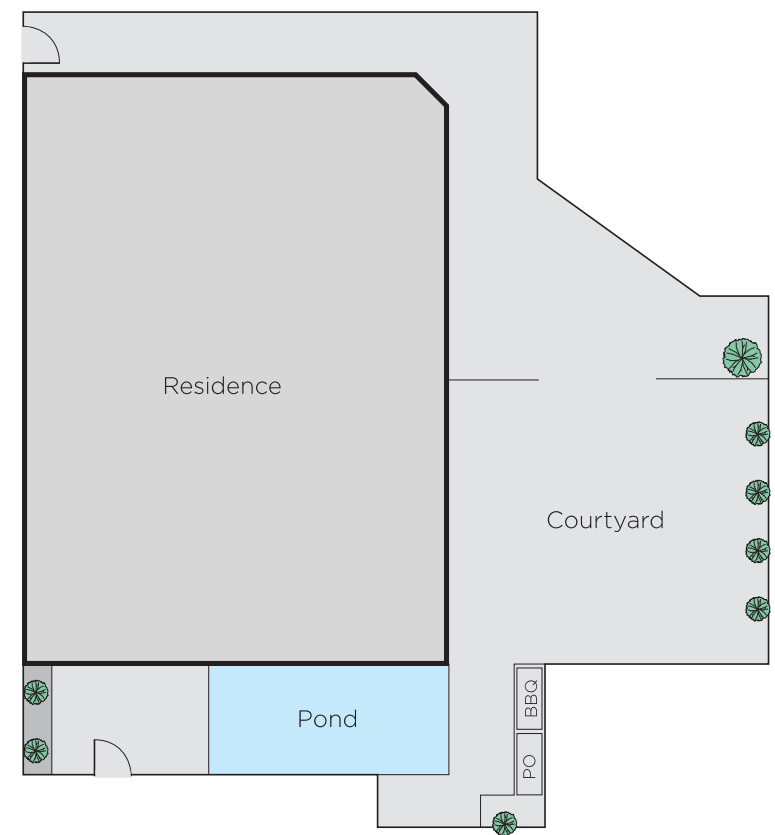
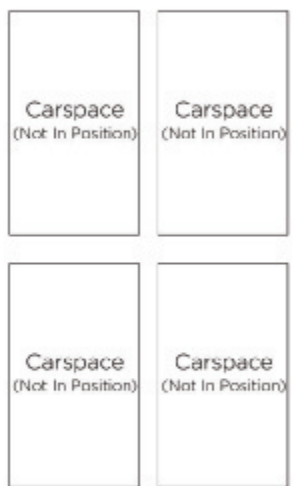
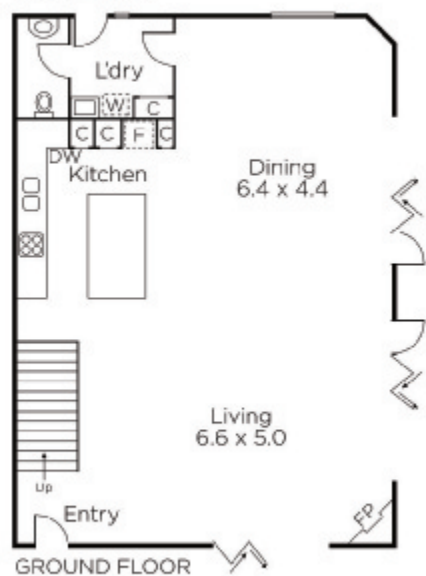
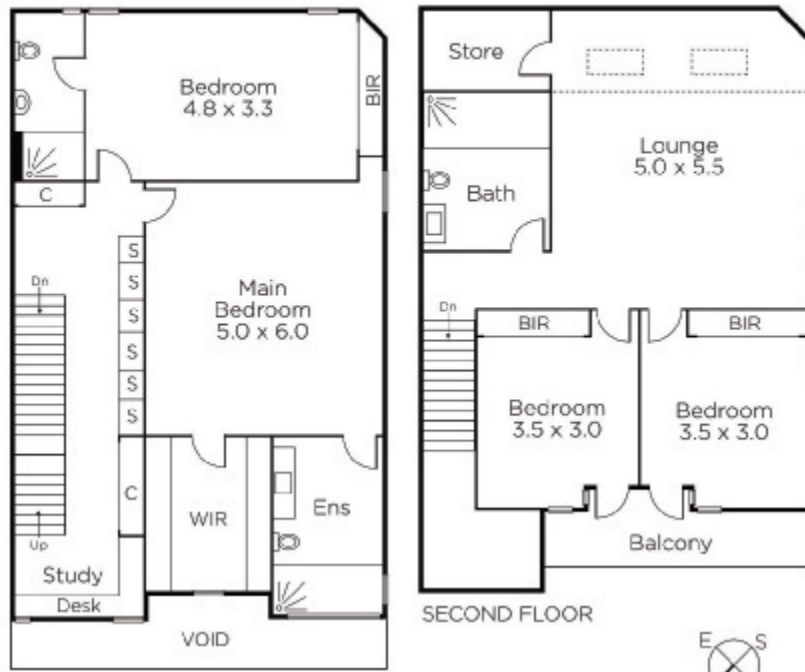
Justin Holod 0411 669 161

Nicholas Beks 0417 511 548

101 Dundas Place Albert Park

marshallwhite.com.au


MARSHALLWHITE



Disclaimer: Information provided is believed to be accurate as at the date of printing, no responsibility is taken for any errors or omissions. It is your responsibility to obtain independent, professional advice. Personal information collected from you is for security purposes and to contact you should the property sell prior to auction. We may use this information to provide you with other real estate services including referrals to authorised financial services' providers. Visit our website at www.marshallwhite.com.au for our privacy policy.