

61 Sherwood Avenue Chelsea



3 1 1

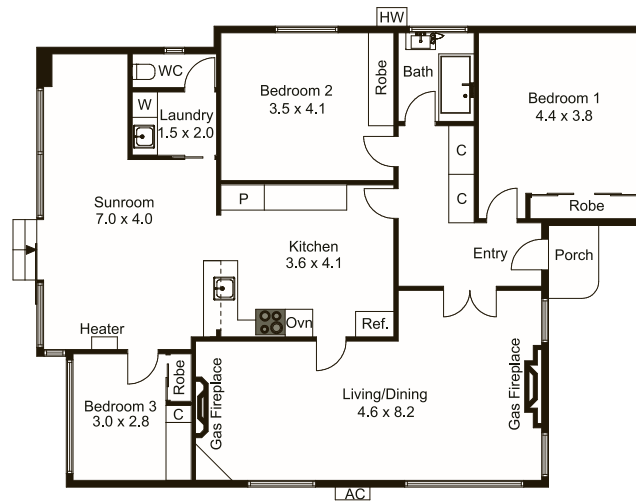
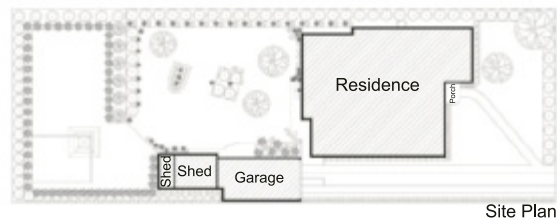
First time offered, beautifully maintained 1948 family home set on 738m2 approx. Comfortable now, admire the fabulous period detail, interconnecting living spaces and extensive backyard complete with fruit trees, veggie beds and manicured gardens while contemplating a contemporary renovation. Subdivision or redevelopment potential (STCA). Brilliantly located an approx. 3-min stroll to Bicentennial Park, local shops plus 550m (approx.) to Chelsea Primary School and a few steps further to St Joseph’s School. Moments to Chelsea Village, train and the beach.

Auction

Saturday 6 October - 10.30am

Contact

James French 0434 955 657
 jfrench@buxton.com.au



(Not In Position)



We have obtained all information in this document from sources we believe to be reliable; however, we cannot guarantee its accuracy. Prospective purchasers are advised to carry out their own investigations.

