




MARSHALLWHITE

61 Heath Street
Port Melbourne



City Skyline Aspects from Premier Location

Arranged across two levels and enhanced by striking period details, this magnificent residence occupies a rare wide allotment. The ultimate space for year-round entertaining has been created by the seamless grouping of open-plan living spaces, secluded courtyard and designer kitchen with stainless-steel appliances and stone benchtops. The main bedroom, located on the first floor, comprises extensive built-in robes and balcony with city skyline views. Two additional bedrooms with fireplaces (one with built-in robes), study and bathroom complete this masterful floorplan.

61heathstreet-portmelbourne.com

3 1

Auction Saturday 23rd September at 12.30pm

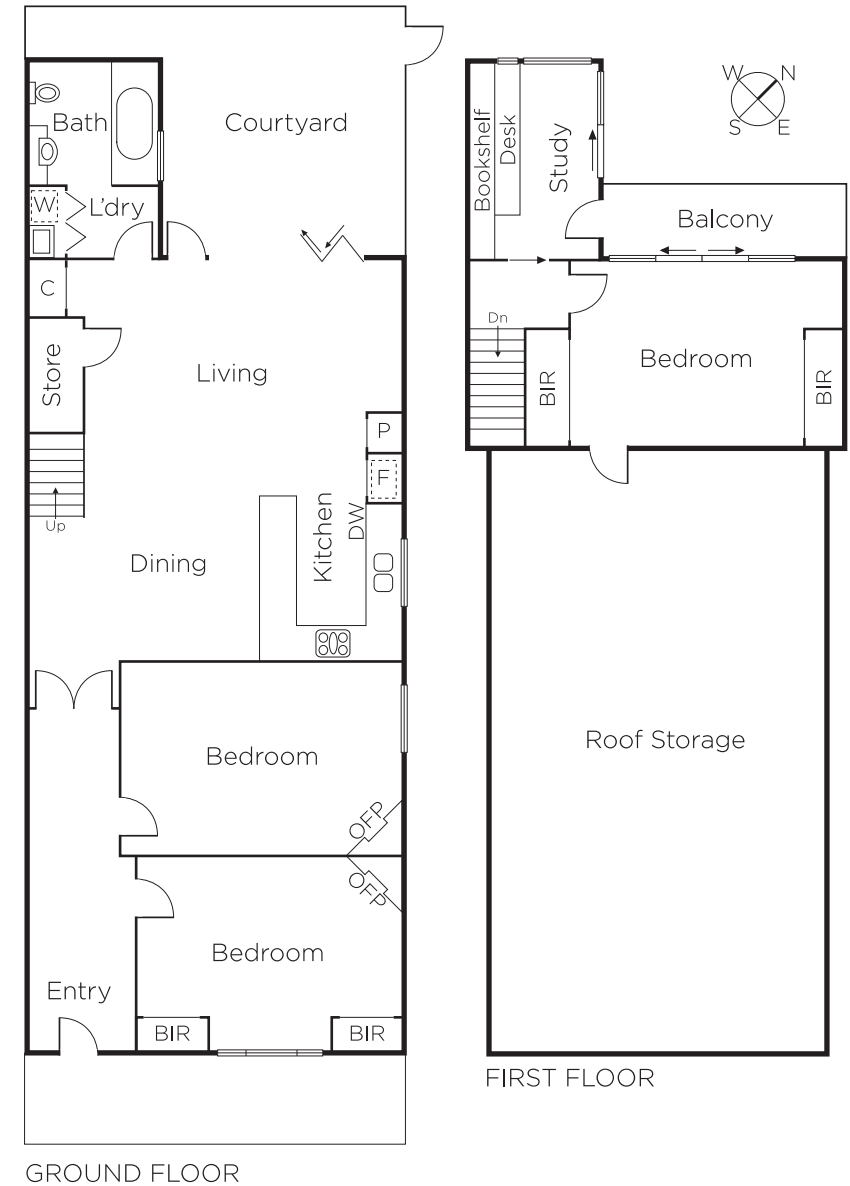
Matthew Grima 0403 438 601

Kaine Lanyon 0411 875 478

Sarah Wood 0408 902 827

101 Dundas Place Albert Park
marshallwhite.com.au

MARSHALLWHITE



Disclaimer: Information provided is believed to be accurate as at the date of printing, no responsibility is taken for any errors or omissions. It is your responsibility to obtain independent, professional advice. Personal information collected from you is for security purposes and to contact you should the property sell prior to auction. We may use this information to provide you with other real estate services including referrals to authorised financial services' providers. Visit our website at www.marshallwhite.com.au for our privacy policy.