



MARSHALLWHITE

603 Burke Road
Camberwell



"Avalon" c1920 - Enduring Family Appeal

This classic late Edwardian family residence capitalises on its large corner allotment with a lovely leafy garden as well as a prime location within a few moments walking distance of Camberwell & Hawthorn East amenities. The residence exudes period charm & warmth over 2-levels featuring sitting room & dining, informal living (OFP), 4-bedrooms, downstairs main/ensuite plus 3-upstairs attic-style with a family bathroom. A well-appointed Euro kitchen/meals flows to a covered outdoor dining & entertaining area, laundry & WC plus a retreat, bedroom or office/studio with bathroom & rem/garage & OSP.

603burkeroad-camberwell.com

5 3 2

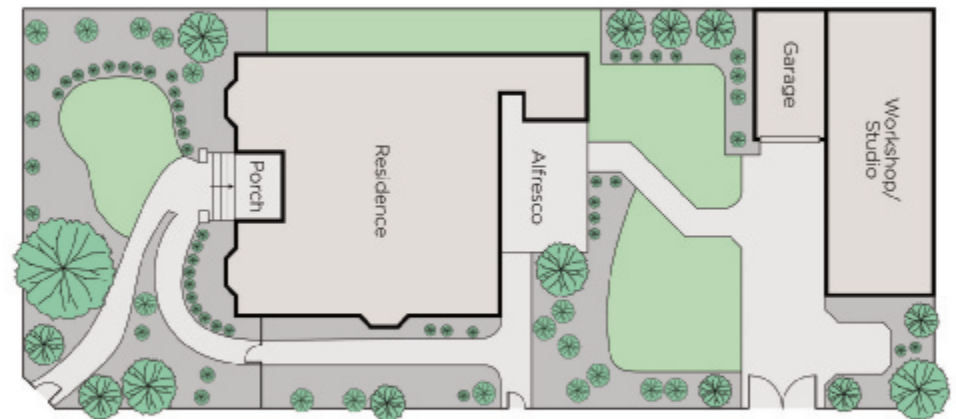
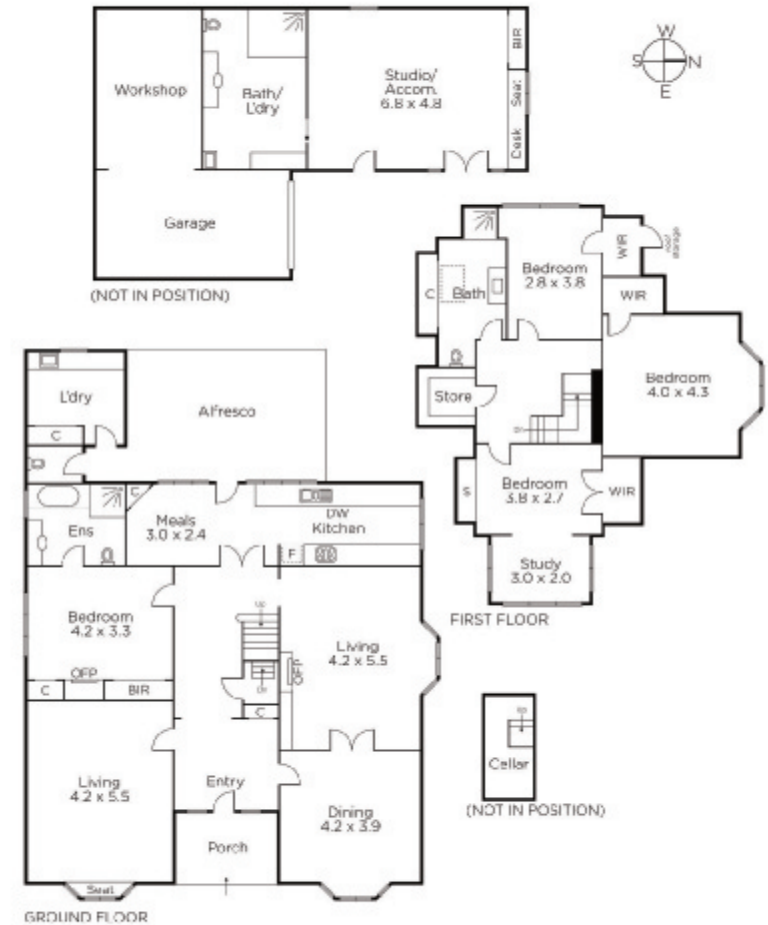
Auction Saturday 12th May at 10.30am

Andrew Gibbons
0407 577 007

Nick Ptak
0413 370 442


MARSHALLWHITE

801 Glenferrie Road, Hawthorn



Disclaimer: Information provided is believed to be accurate as at the date of printing, no responsibility is taken for any errors or omissions. It is your responsibility to obtain independent, professional advice. Personal information collected from you is for security purposes and to contact you should the property sell prior to auction. We may use this information to provide you with other real estate services including referrals to authorised financial services providers. Visit our website at www.marshallwhite.com.au for our privacy policy.