



MARSHALLWHITE

6 Through Road
Camberwell





A Sunny Californian Family Lifestyle

Delivering outstanding credentials for a much sought-after family lifestyle this instantly appealing, renovated and extended Californian is underpinned by a sought-after family lifestyle corner location near Through Road Reserve. The home retains subtle period attributes including leadlight glass and decorative ceilings matched to a contemporary inspired interior providing a flowing and flexible floor-plan ideal for busy young families. The all-white, light-filled interior features a central Baltic Pine fretwork arched hallway opening to the main bedroom with WIR and ensuite, a sitting and adjacent dining room; through to expansive extension incorporating three separately zoned bedrooms, a family bathroom, laundry and storeroom. Plus a superb CaesarStone and prestige Smeg equipped kitchen and informal living and dining area with bi-fold doors opening to a covered timber deck perfect for indoor/outdoor entertaining and an ornamental tree-lined northern side garden. Other features of this excellent family home include winter-time City glimpses, video intercom, alarm, ducted heating, refrigerated air conditioning, OFP and Heat 'n GloFP, remote gate to off-street parking with access from Milverton Street.

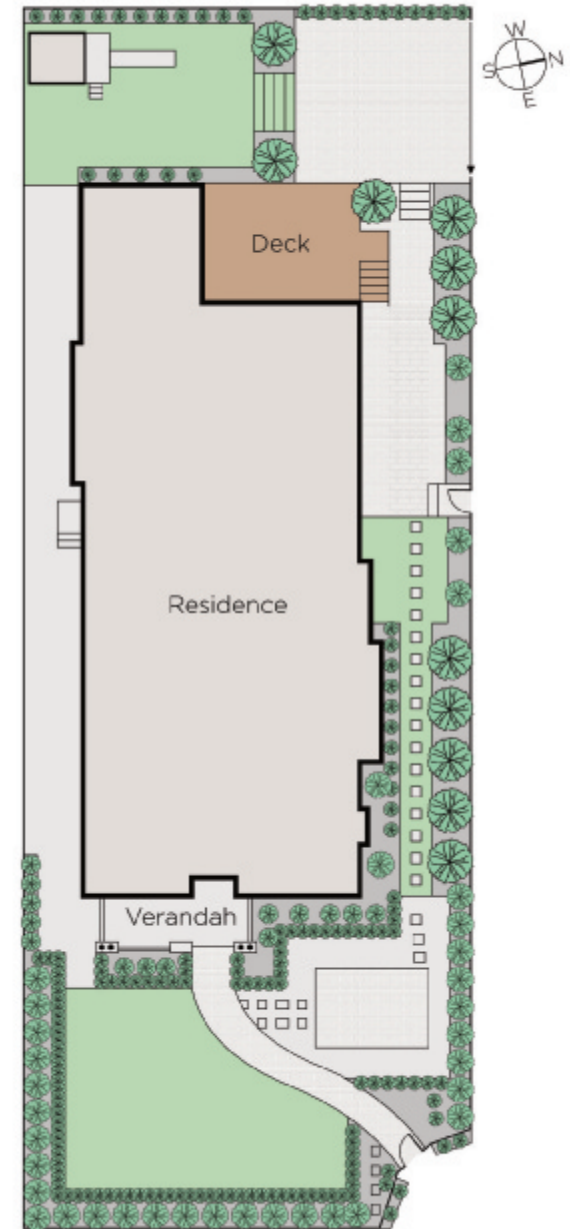
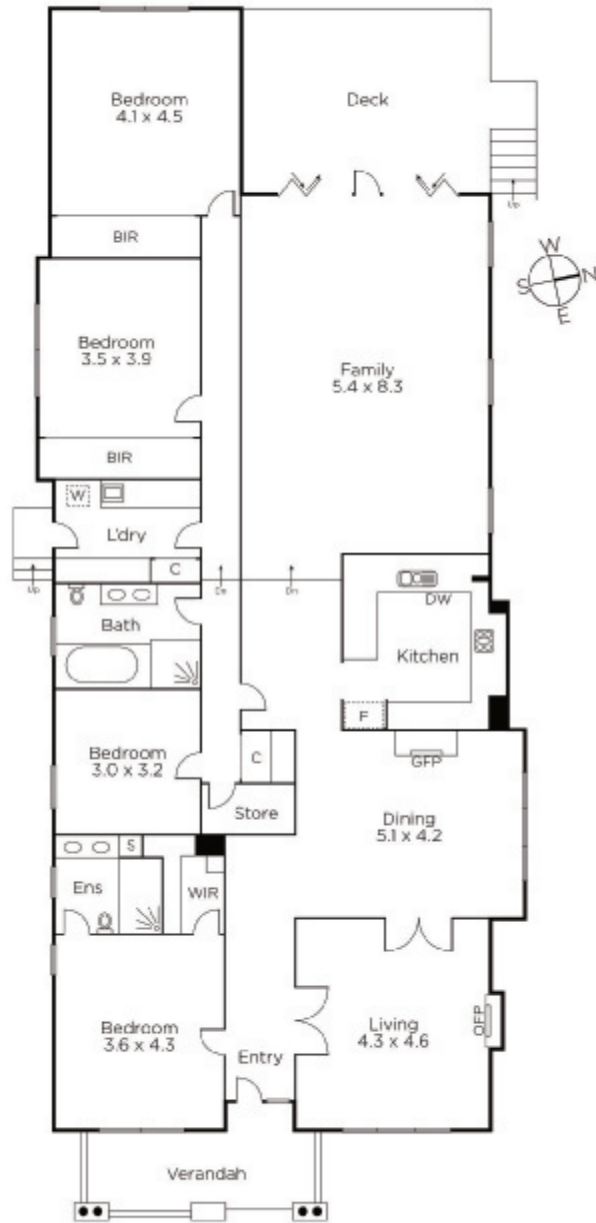
4  2  2 

Auction Saturday 27th October at 9.30am

Désirée Wakim
0412 336 266

James Tostevin
0417 003 333


MARSHALLWHITE
801 Glenferrie Road, Hawthorn



Disclaimer: Information provided is believed to be accurate as at the date of printing, no responsibility is taken for any errors or omissions. It is your responsibility to obtain independent, professional advice. Personal information collected from you is for security purposes and to contact you should the property sell prior to auction. We may use this information to provide you with other real estate services including referrals to authorised financial services' providers. Visit our website at www.marshallwhite.com.au for our privacy policy.