




MARSHALLWHITE

6 Raleigh Street
Malvern





"Willmere"

At the end of a tree-lined cul de sac walking distance to Glenferrie Rd shops and restaurants, Malvern station and Malvern Primary and parks, this charming block-fronted Edwardian residence's captivating and immaculately presented dimensions deliver instant family lifestyle appeal. The classic allure of high ceilings, leadlight windows and stained Baltic pine floors are highlighted in the central hallway and elegant sitting room with an open fireplace. The gourmet kitchen appointed with a 90cm Smeg oven and timber benches and a generous living and dining room open through bi-fold doors to a private leafy northwest garden with covered terrace and access to the side lane. The three spacious bedrooms, all with built in robes, are accompanied by two bathrooms and a Euro-laundry.

3  2 

Auction Saturday 27th October at 2.30pm

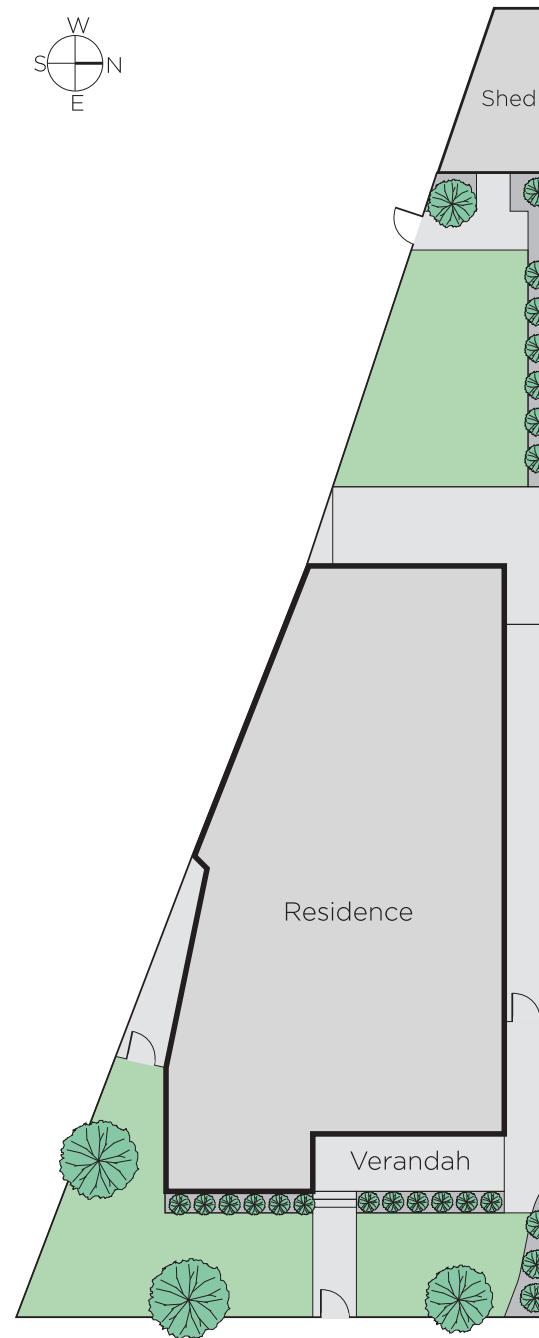
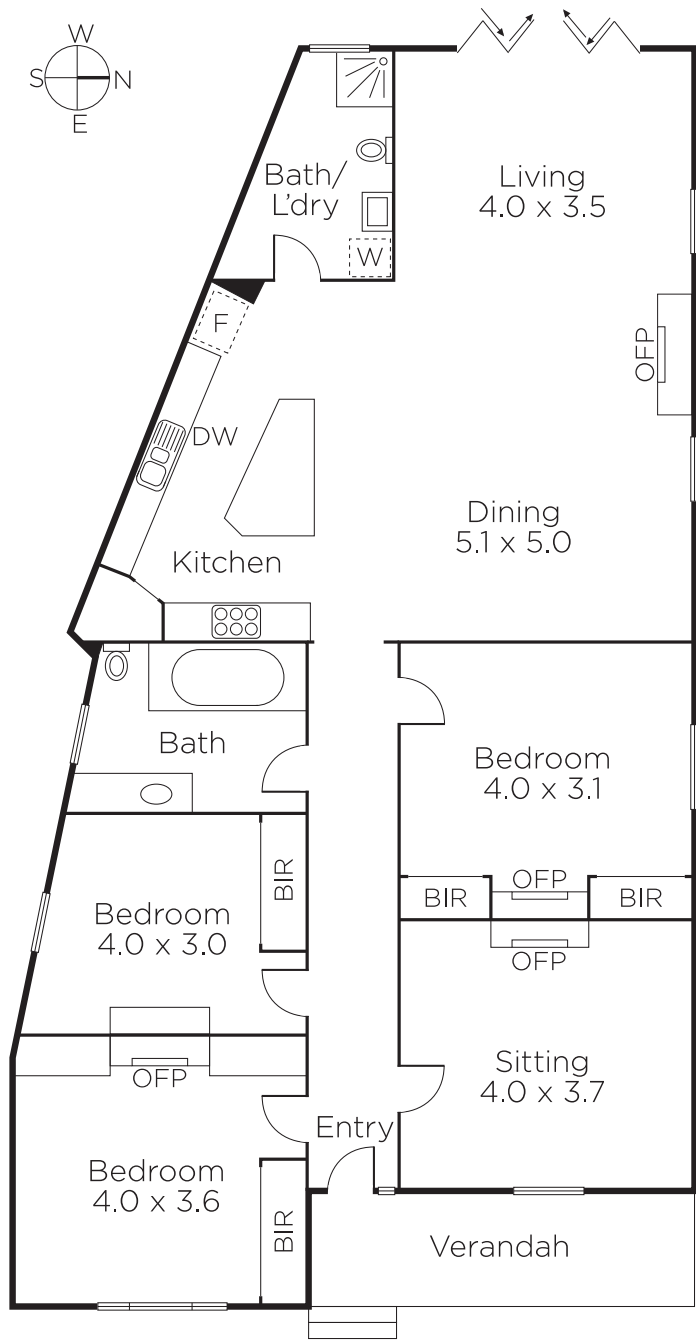
Daniel Wheeler
0411 676 058

Justin Krongold
0403 163 355

Clare Moloney
0401 546 441


MARSHALLWHITE

1111 High Street, Armadale



Disclaimer: Information provided is believed to be accurate as at the date of printing, no responsibility is taken for any errors or omissions. It is your responsibility to obtain independent, professional advice. Personal information collected from you is for security purposes and to contact you should the property sell prior to auction. We may use this information to provide you with other real estate services including referrals to authorised financial services' providers. Visit our website at www.marshallwhite.com.au for our privacy policy.