



6


MARSHALLWHITE
6 Melrose Avenue
Malvern East





Inspired Art Deco Style

A sensational renovation and extension that brilliantly merges Art Deco charm with contemporary designer style has created an unexpectedly spacious, effectively zoned and instantly appealing family domain. Set within a glorious tree-lined heritage streetscape, it offers close proximity to East Malvern station, Waverley Oval, Terminus Village shops and trams, schools, freeway access and Chadstone Shopping Centre. The inviting, light-filled interior features timber floors through the central hall, evocative sitting room with open fireplace, gourmet European kitchen boasting white stone benches and captivating dining area. Soaring vaulted ceilings accentuate the proportions of the spacious living room with study nook opening to the superbly landscaped northeast garden with large entertaining deck shaded by a magnificent Cypress tree. The main bedroom with designer ensuite and built in robe enjoys its own space apart from three additional double bedrooms and a stylish bathroom with freestanding bath. Ready to just move in and enjoy, it also includes an alarm, powder-room, laundry and off street parking. Land size: 580sqm approx.

6melroseavenue-malverneast.com

4  2  2 

Auction Saturday 20th May at 10.30am

Daniel Wheeler 0411 676 058

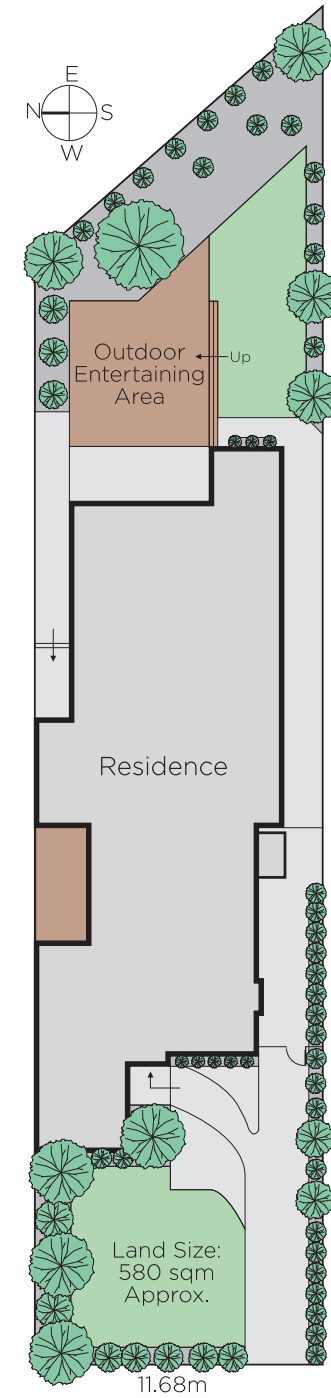
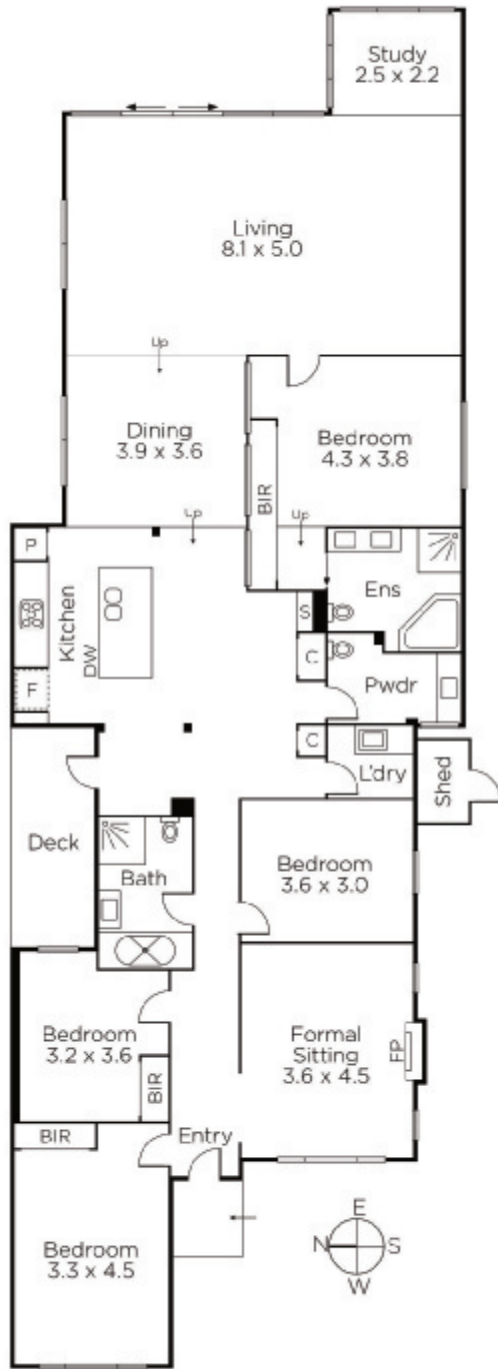
Justin Krongold 0403 163 355

Damian O'Sullivan 0418 566 916

1111 High Street Armadale

marshallwhite.com.au


MARSHALLWHITE



Disclaimer: Information provided is believed to be accurate as at the date of printing, no responsibility is taken for any errors or omissions. It is your responsibility to obtain independent, professional advice. Personal information collected from you is for security purposes and to contact you should the property sell prior to auction. We may use this information to provide you with other real estate services including referrals to authorised financial services' providers. Visit our website at www.marshallwhite.com.au for our privacy policy.