



MARSHALLWHITE

6 Hatfield Street
Balwyn North



Design Your Own Future

An exceptional opportunity to make your dreams a reality on this ideal new home site of over 660sqm with wide street frontage. Currently comprising four bedrooms, formal living room and relaxed second living space, with single garage and garden shed within the private north-west facing rear garden. In close proximity to Kew High School, Stradbroke Park, Balwyn North Primary, St Bede's School, High Street trams, Burke Road and Doncaster Road, buses and the Eastern Freeway, the possibilities for this substantial family-friendly property know no bounds.

6hatfieldstreet-balwynnorth.com

3 1 1

Auction Saturday 12th May at 11.30am

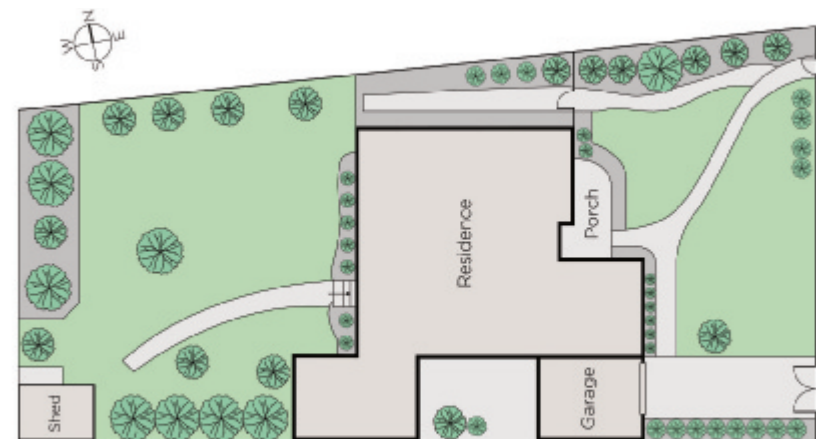
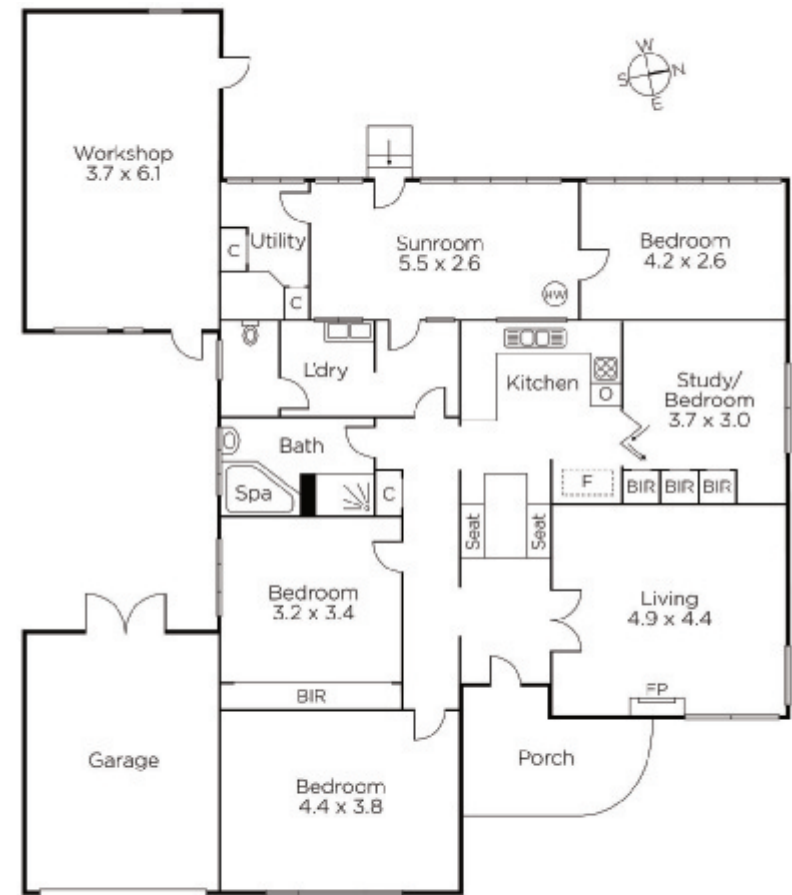
John Li
0476 384 718

Doug McLauchlan
0418 377 718

Stephen Gough
0439 844 855


MARSHALLWHITE

801 Glenferrie Road, Hawthorn



Disclaimer: Information provided is believed to be accurate as at the date of printing, no responsibility is taken for any errors or omissions. It is your responsibility to obtain independent, professional advice. Personal information collected from you is for security purposes and to contact you should the property sell prior to auction. We may use this information to provide you with other real estate services including referrals to authorised financial services providers. Visit our website at www.marshallwhite.com.au for our privacy policy.