



MARSHALLWHITE

6 Ferndale Road
Glen Iris



Exceptional Potential

Desirably situated in a highly sought after location close to Ferndale Park and Trail, schools, shops, Glen Iris station and freeway access, this well presented 3 bedroom timber homes period charm and 757sqm (approx) allotment highlights its potential as a superb renovation prospect or new home site (STCA). Beyond the inviting front verandah is a north facing lounge and main bedroom, 2 further bedrooms that share a bathroom, informal dining and modern kitchen overlooking a deep private garden. Laundry, gas ducted heating, alarm, lock up garage + further OSP, leadlight windows and high ceilings.

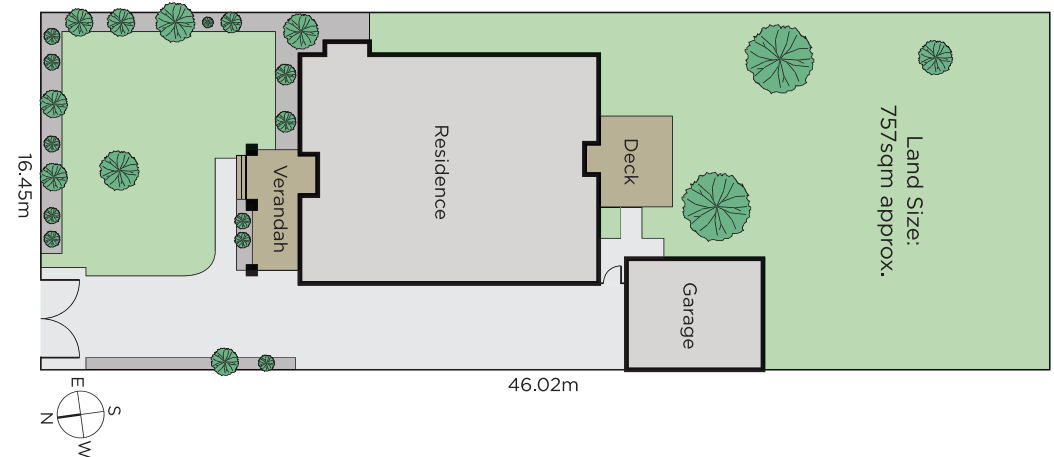
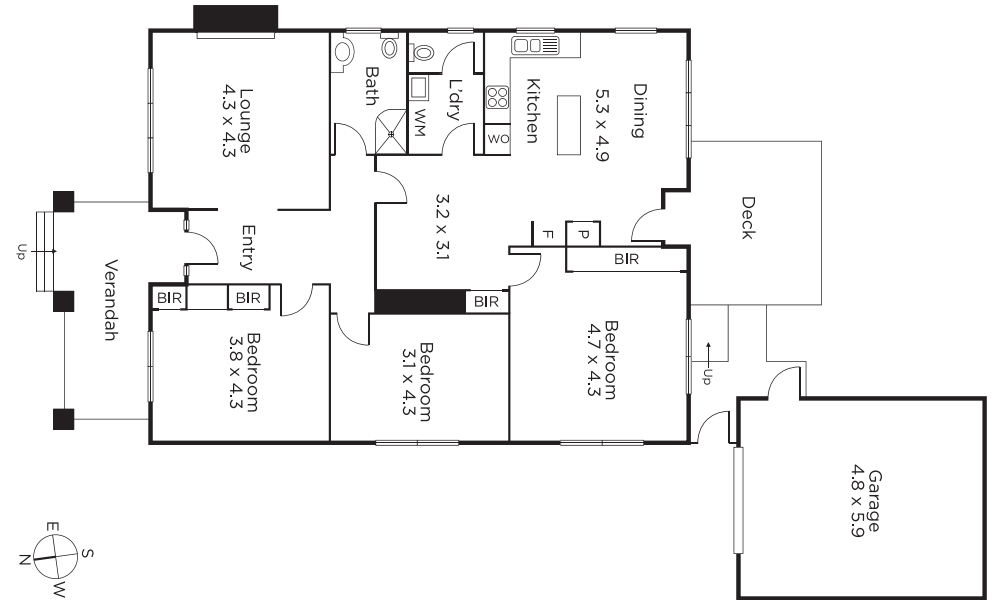
3 1 2

Auction Saturday 16th February at 12.30pm

Jason Brinkworth
0416 006 282

Justin Krongold
0403 163 355

Daniel Wheeler
0411 676 058




MARSHALLWHITE

1111 High Street, Armadale

Disclaimer: Information provided is believed to be accurate as at the date of printing, no responsibility is taken for any errors or omissions. It is your responsibility to obtain independent, professional advice. Personal information collected from you is for security purposes and to contact you should the property sell prior to auction. We may use this information to provide you with other real estate services including referrals to authorised financial services providers. Visit our website at www.marshallwhite.com.au for our privacy policy.