




MARSHALLWHITE

6 Bundoran Parade
Mont Albert North





Designed for Family Living and Entertaining

Gracing a magnificent deep garden allotment of 1,735sqm approx. which is a haven for young families, this distinctive two-storey brick family residence delivers extensive family indoor and outdoor living and entertaining spaces; including a resort-style solar & gas heated pool and spa. Originally built to exacting standards by a craftsman builder the home features return verandahs with the lower level introduced by an impressive atrium with second level ceilings and OFP leading to a study area, four bedrooms, main with ensuite, two with student desks plus a family bathroom with spa, large laundry & rumpus room. Whilst the upper level has a powder room and is highlighted by expansive formal/informal living and dining spaces - the formal dining/lounge has a marble OFP, concealed bar & French doors opening to the upper verandah with panoramic northern views. Whilst the family room has a timber ceiling with sky windows & incorporates a timber kitchen with emporite finishes & with WIP, DeLonghi S/S stove & 2-drawer dishwasher flowing to a covered deck with blinds overlooking the pool & lush garden, complete with gazebo & cubby house. Land size: 1,735sqm approx.

6bundoranparade-montalbertnorth.com

4 2 4

Auction Saturday 21st October at 10.30am

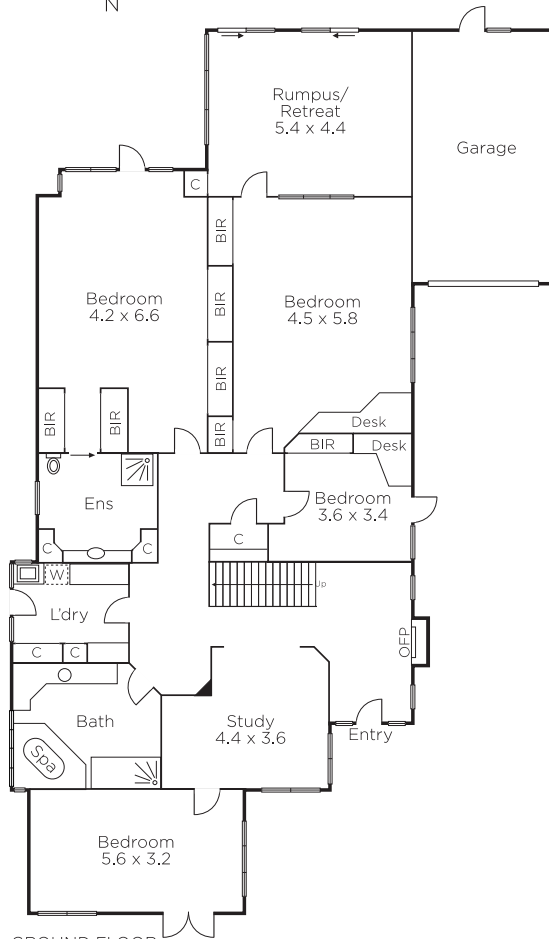
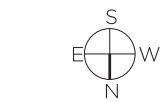
James Tostevin 0417 003 333

Charlie Tostevin 0431 713 205

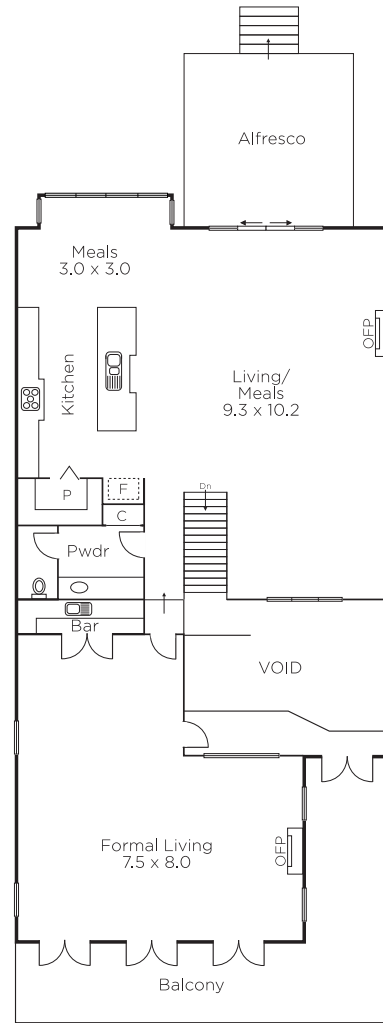
Grayson Rayner 0433 654 744

801 Glenferrie Road Hawthorn
marshallwhite.com.au


MARSHALLWHITE



GROUND FLOOR



FIRST FLOOR

