




MARSHALLWHITE


5a Kooyongkoot Road
Hawthorn





Superb Family Living in a Secluded Scotch Hill Oasis

Privately and securely positioned at the end of a long driveway lined with camellias - this immaculately maintained single level contemporary family residence surrounds a central paved courtyard with pretty, easy care gardens, a water feature and framed by two mature Manchurian Pear trees; delivering a peaceful oasis in the prestigious Scotch Hill precinct, close to highly desirable shopping areas, transport, Kooyong parklands and Gardiners Creek trails. The elegant, light-filled interior features a soft neutral décor providing an inviting ambience with a tiled entrance foyer flowing to a sitting room and separate dining room plus an expansive informal living and dining area integrated with a stylishly appointed CaesarStone kitchen with Miele appliances and separate laundry opening to a leafy rear courtyard garden and storeroom. Complemented by a fitted study, powder room, three zoned bedrooms, main with a WIR and ensuite, two in a separate wing with a family bathroom and Miele equipped kitchenette/meals. Other features include hydronic heating, R/C air conditioners, OFP, irrigation, 2kW solar power system, remote double garage/workshop with turning area/OSP.

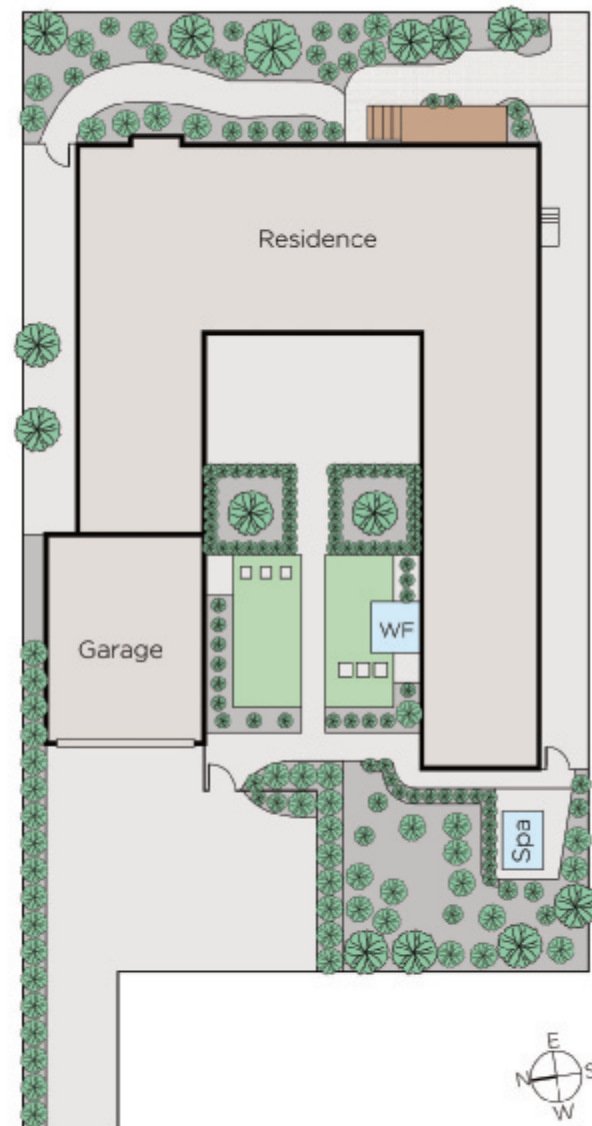
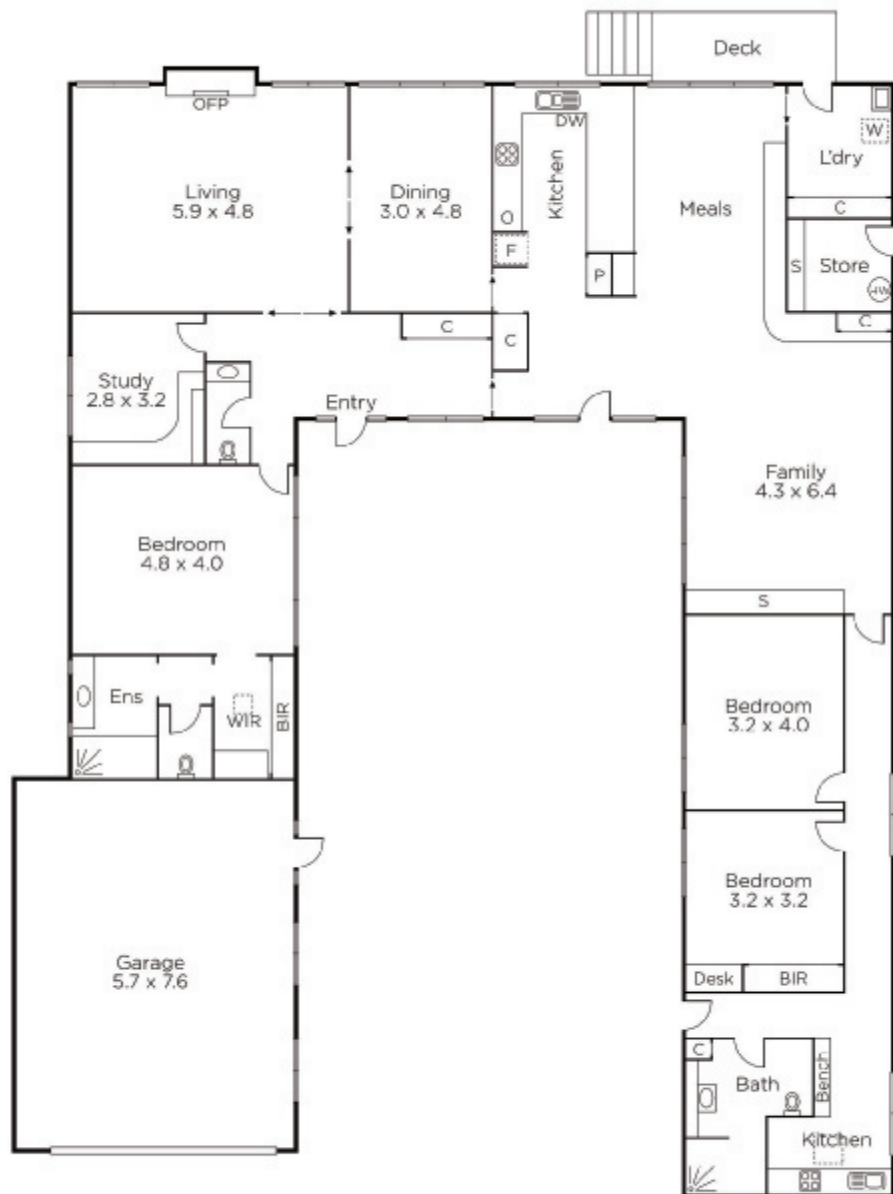
3  2  2 

Auction Saturday 10th November at 12.30pm

James Tostevin
0417 003 333

Michael Wood
0425 280 191


MARSHALLWHITE
801 Glenferrie Road, Hawthorn



Disclaimer: Information provided is believed to be accurate as at the date of printing, no responsibility is taken for any errors or omissions. It is your responsibility to obtain independent, professional advice. Personal information collected from you is for security purposes and to contact you should the property sell prior to auction. We may use this information to provide you with other real estate services including referrals to authorised financial services' providers. Visit our website at www.marshallwhite.com.au for our privacy policy.