



MARSHALLWHITE
ONE

5/9 Churchill Avenue
Chadstone



Immaculate and Peaceful, Central to Everything

Offering all the advantages of a house, but with only a fraction of the maintenance, this immaculate and spacious, two bedroom home is peacefully situated at the rear of this block of only five with a substantial, yet low maintenance, backyard. Beautifully presented inside a genuine entrance hall, the home's open-plan kitchen / meals / living is light-filled and 'L' shaped to combine the ability for zoning with an up-lifting sense of flow. Also features robes in each bedroom and reverse cycle air conditioning, as well as a bathroom with independent bath and shower, a separate wc and a huge double garage. With convenient city access and Chadstone Shopping Centre just around the corner, this superbly located home is also just around the corner from Oakleigh Golf Course and Oakleigh Recreation Centre for a lifestyle rich in diversity and advantages for first home buyers, investors and down-sizers alike.

5-9churchillavenue-chadstone.com

2 1 2

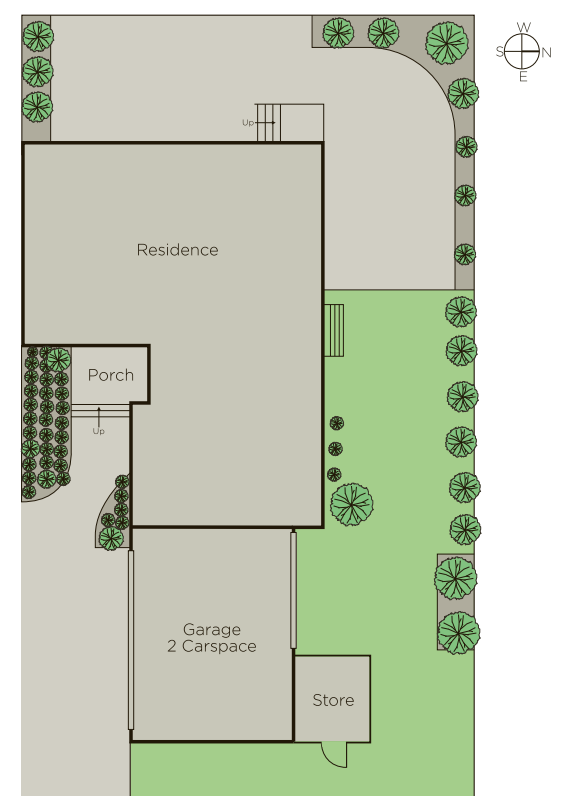
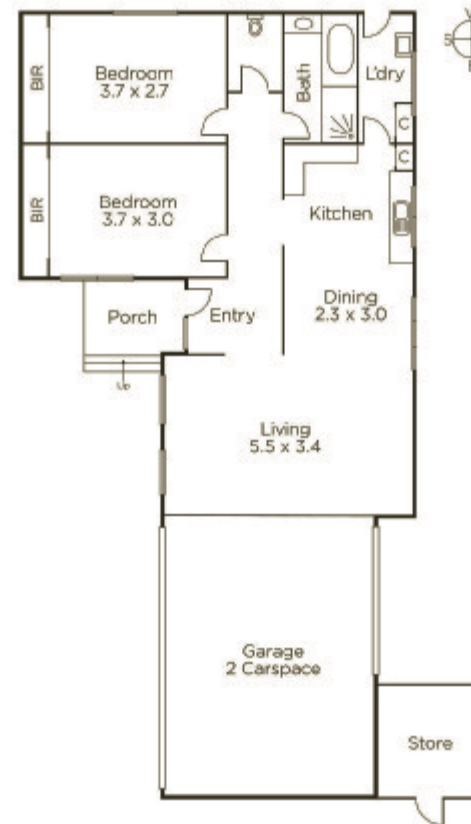
Auction Saturday 21st October at 10.30am

Danny See 0402 533 853

Bethany Wilkinson 0449 285 813

801 Glenferrie Road Hawthorn

9822 9999 mwone.com.au



MARSHALLWHITE
ONE

Disclaimer: Information provided is believed to be accurate as at the date of printing, no responsibility is taken for any errors or omissions. It is your responsibility to obtain independent, professional advice. Personal information collected from you is for security purposes to contact you should the property sell prior to auction. We may use this information to provide you with other real estate services including referrals to authorized financial services providers. Visit our website at www.mwone.com.au for our privacy policy.