




MARSHALLWHITE

5/83-89 Brighton
Road
Elwood



Impressive Warehouse Conversion

An impressive industrial conversion arranged across two levels, this Elwood townhouse located in Melbourne's iconic 'Old Hat Factory' is the epitome of urban chic. The perfect space for entertaining, a Pullman kitchen flows seamlessly into generous dining and lounge areas bathed in natural light. The first floor boasts two generous bedrooms complete with built-in wardrobes and a modern bathroom with shower and bath. Additional features include storage space/nook, European laundry, powder room, secure off-street parking, intercom and Ademco security system.

5-83-89brightonroad-elwood.com

2 1.5 1

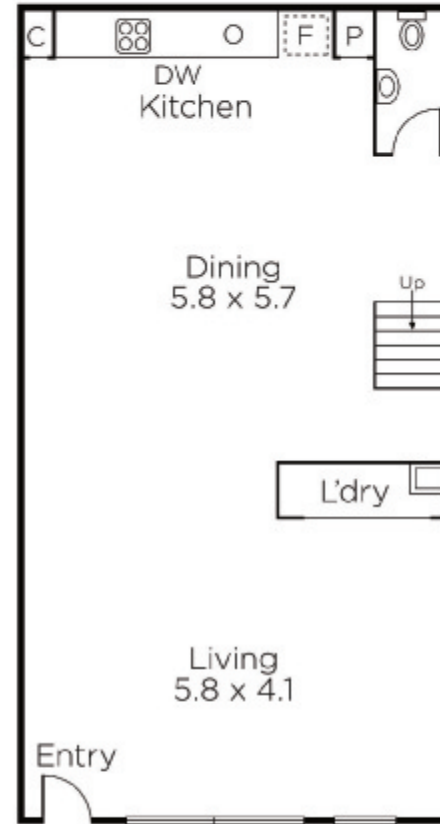
Auction Saturday 17th June at 10.30am

Sarah Wood 0408 902 827

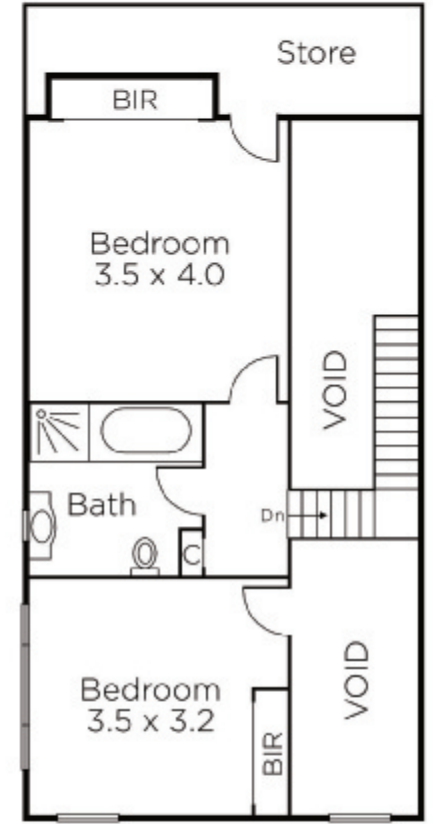
Oliver Bruce 0409 856 599

101 Dundas Place Albert Park
marshallwhite.com.au


MARSHALLWHITE



GROUND FLOOR



FIRST FLOOR



Disclaimer: Information provided is believed to be accurate as at the date of printing, no responsibility is taken for any errors or omissions. It is your responsibility to obtain independent, professional advice. Personal information collected from you is for security purposes and to contact you should the property sell prior to auction. We may use this information to provide you with other real estate services including referrals to authorised financial services' providers. Visit our website at www.marshallwhite.com.au for our privacy policy.