




MARSHALLWHITE

58 Clark Street
Port Melbourne



Period Style, Perfectly Positioned

Serenely nested within one of the finest tree lined streets in the district, the instant appeal of this enchanting freestanding Period residence's stylishly presented spaces is further enhanced by its location. Blackbutt floors flow through the arched hallway to a gourmet granite kitchen and light-filled living/dining room opening through bi-fold doors to a private paved courtyard with off street parking via Nelson St. Two double bedrooms and stylish central bathroom are matched upstairs by a spacious third bedroom and chic bathroom. Ideal for immediate enjoyment. Land size: 165sqm approx.

58clarkstreet-portmelbourne.com

3 2 1

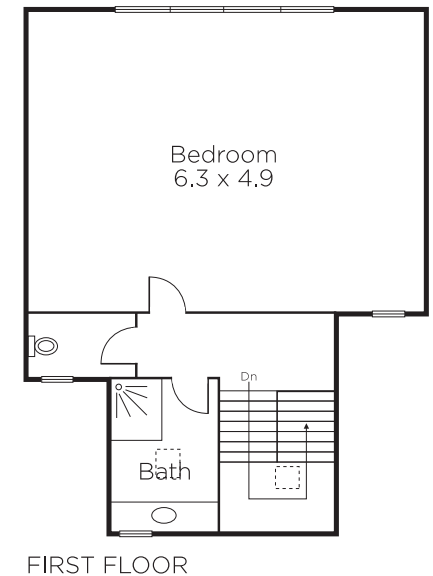
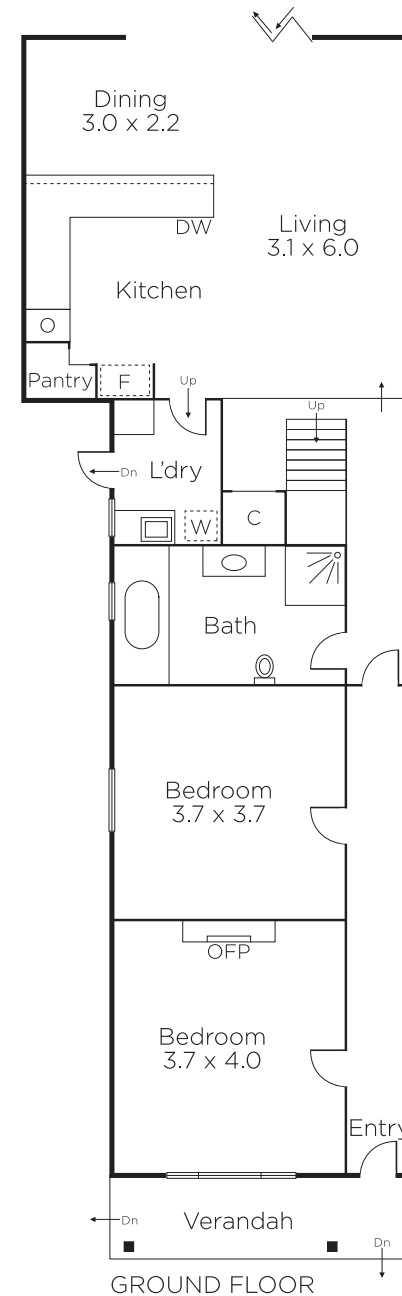
Auction Saturday 24th February at 10.30am

Justin Holod
0411 669 161

Georgia Whitford
0434 827 563


MARSHALLWHITE

101 Dundas Place, Albert Park



Disclaimer: Information provided is believed to be accurate as at the date of printing, no responsibility is taken for any errors or omissions. It is your responsibility to obtain independent, professional advice. Personal information collected from you is for security purposes and to contact you should the property sell prior to auction. We may use this information to provide you with other real estate services including referrals to authorised financial services providers. Visit our website at www.marshallwhite.com.au for our privacy policy.