



MARSHALLWHITE

57a Midlothian Street
Malvern East





Designer Style and Luxury

Showcasing the finest in design, quality and luxury, this brand new contemporary executive residence's state of the art and exceptionally spacious dimensions deliver unforgettable family appeal close to schools, parks, Chadstone and freeway access. From the imposing timber door to the wide oak floors and designer tiles, bespoke finishes are highlighted through every room. The broad entrance hall flows through to an expansively proportioned open plan living and dining room with a stunning gourmet Miele kitchen boasting stone benches. The living area opens to a full width alfresco dining deck and private landscaped north garden. Superbly appointed and zoned accommodation comprises a downstairs main bedroom with built in robe and chic en-suite and upstairs a second main bedroom also with built in robe and stylish en-suite, two additional double bedrooms with built in robes, a retreat and designer bathroom with freestanding bath. Impeccably appointed with heating/cooling, security system, video intercom, double-glazing, powder-room, laundry, irrigation, garden shed, auto gates and internally accessed garage.

57amidlothianstreet-malverneast.com

4  3  2 

Auction Saturday 17th February at 2.30pm

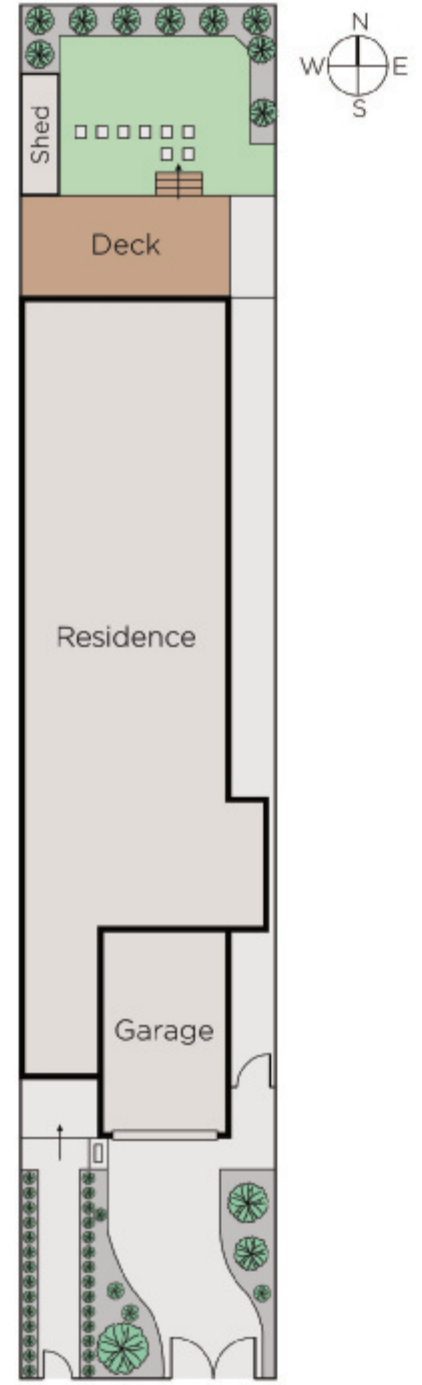
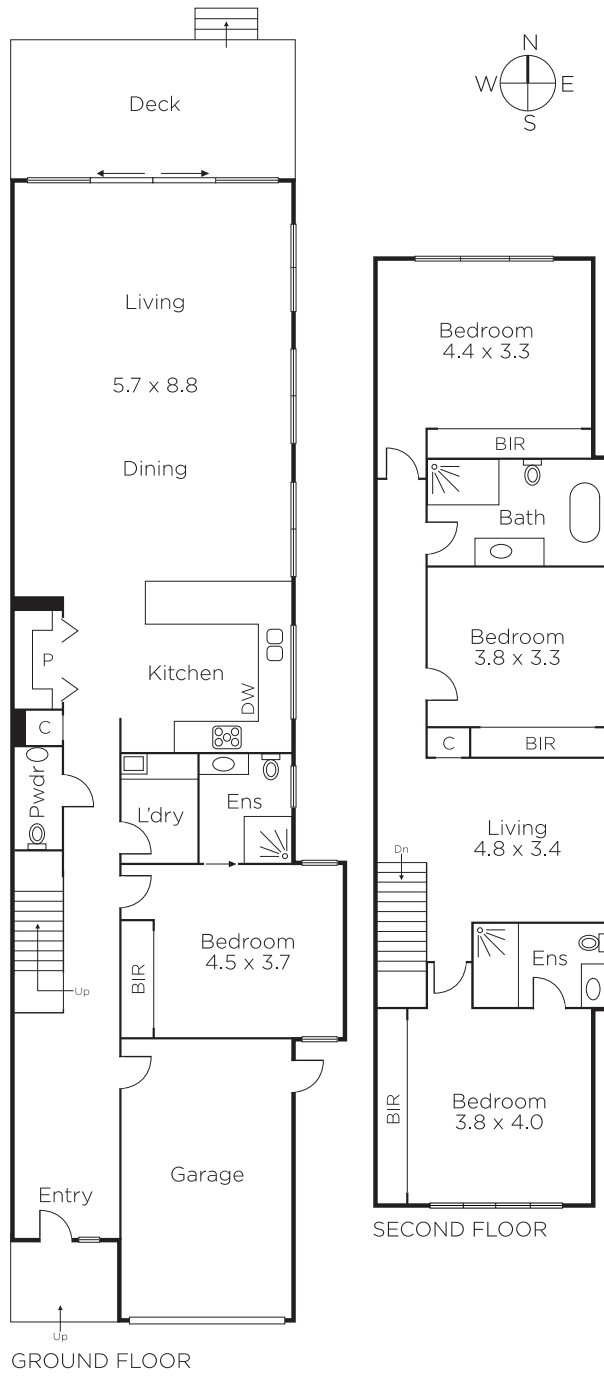
Daniel Wheeler
0411 676 058

Clare Moloney
0401 546 441

Justin Krongold
0403 163 355


MARSHALLWHITE

1111 High Street, Armadale



Disclaimer: Information provided is believed to be accurate as at the date of printing, no responsibility is taken for any errors or omissions. It is your responsibility to obtain independent, professional advice. Personal information collected from you is for security purposes and to contact you should the property sell prior to auction. We may use this information to provide you with other real estate services including referrals to authorised financial services' providers. Visit our website at www.marshallwhite.com.au for our privacy policy.