



MARSHALLWHITE

5/76 Molesworth Street
Kew



A Modern Work of Art

Nestled opposite the Yarra River, this impressive two-storey residence abounds with natural light, sleek modern features and effortless indoor/outdoor living. Architecturally-designed and immaculately presented, the ground floor features a central kitchen and dining, formal sitting room, informal lounge and a leafy courtyard at each end. Upstairs lies the stunning master suite (WIR/ensuite), two bedrooms (BIRs), bright central bathroom, large retreat and two private balconies. Also features polished concrete floors, heating/cooling and double garage. A rare opportunity to secure a unique home in a premier Kew location.

5-76molesworthstreet-kew.com

3 2 2

Auction Saturday 24th March at 11.30am

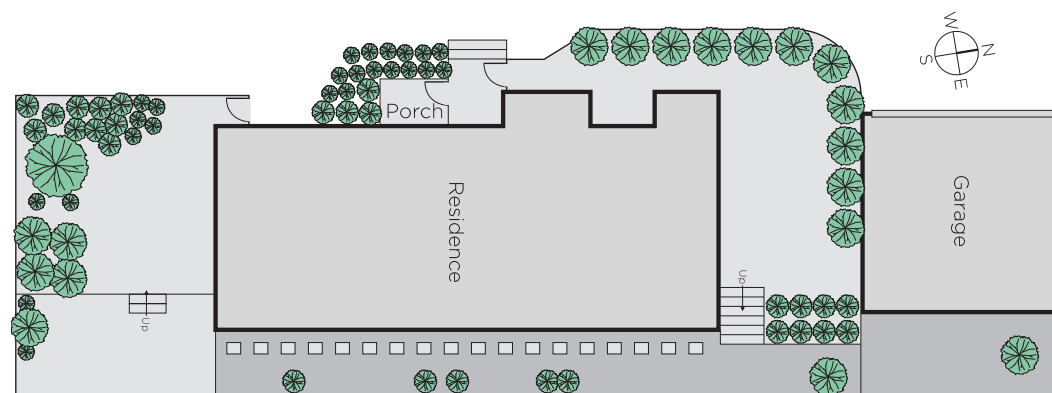
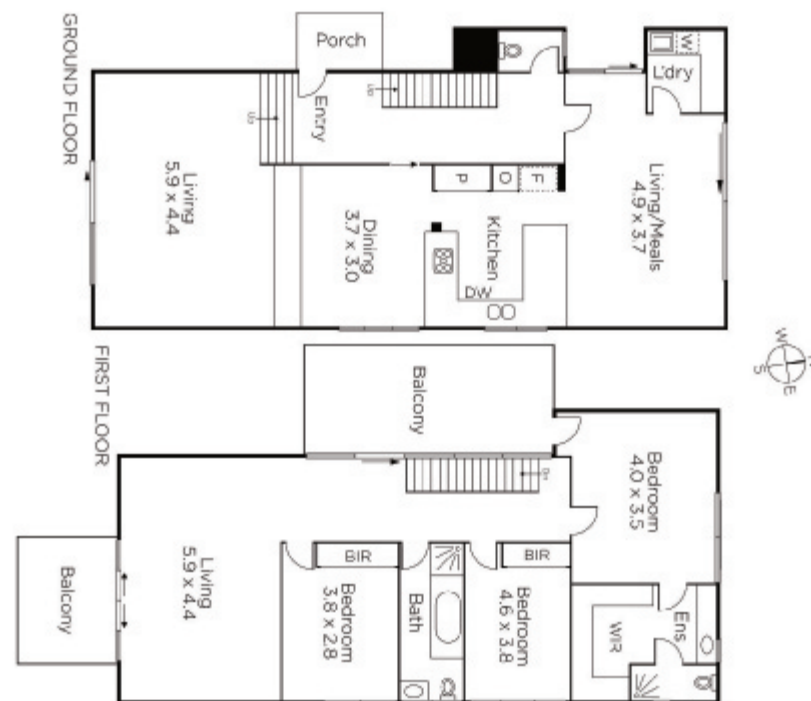
Stephen Gough
0439 844 855

Samara Bella-Coulson
0488 111 915

Doug McLauchlan
0418 377 718


MARSHALLWHITE

801 Glenferrie Road, Hawthorn



Disclaimer: Information provided is believed to be accurate as at the date of printing, no responsibility is taken for any errors or omissions. It is your responsibility to obtain independent, professional advice. Personal information collected from you is for security purposes and to contact you should the property sell prior to auction. We may use this information to provide you with other real estate services including referrals to authorised financial services providers. Visit our website at www.marshallwhite.com.au for our privacy policy.