




MARSHALLWHITE

57 Roseberry Street
Hawthorn East



Pretty Victorian Cottage in Lifestyle Location

Complementing a period streetscape largely occupied by single fronted cottages, this instantly appealing freestanding Victorian cottage is enhanced by a prime location in a popular Hawthorn East pocket with access to Fritsch Holzer park. The interior features Baltic Pine floors flowing through an arched hallway flanking 2-bedrooms (BIRs & OFPs), plus a stylishly renovated bathroom/laundry. A generous north-facing living/dining room with floor-to-ceiling glass includes a well-appointed Bosch S/S kitchen spilling out to a full-width sun-drenched deck plus OSP/ROW. Also includes scope to update, R/C A/C & gas heater.

57roseberrystreet-hawthorneast.com

2 1 2

Auction Saturday 24th June at 9.30am

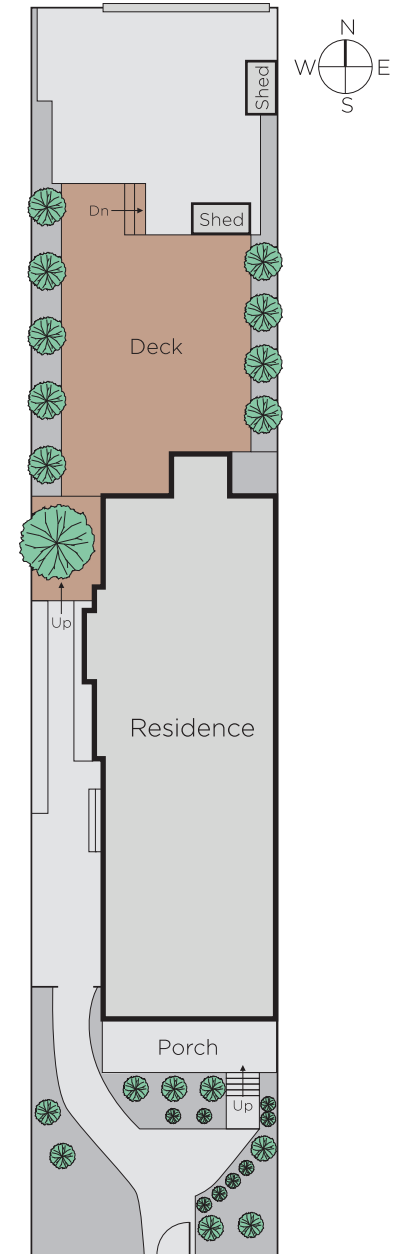
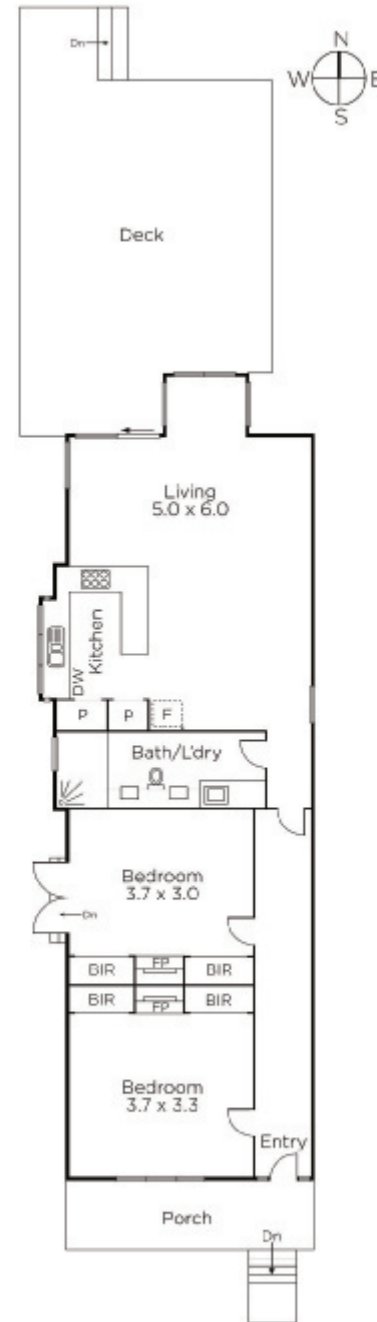
Sally O'Connell 0413 474 474

James Tostevin 0417 003 333

Andrew Gibbons 0407 577 007

801 Glenferrie Road Hawthorn
marshallwhite.com.au


MARSHALLWHITE



Disclaimer: Information provided is believed to be accurate as at the date of printing, no responsibility is taken for any errors or omissions. It is your responsibility to obtain independent, professional advice. Personal information collected from you is for security purposes and to contact you should the property sell prior to auction. We may use this information to provide you with other real estate services including referrals to authorised financial services' providers. Visit our website at www.marshallwhite.com.au for our privacy policy.