




MARSHALLWHITE

57 Midlothian Street
Malvern East





Bespoke Style, Brand New Luxury

In a tranquil location offering close proximity to schools, parks, Chadstone and freeway access, the exceptional design, proportions and level of finish showcased by this stunning brand new contemporary executive residence underpins its instant family appeal.

An imposing customized timber door reveals interior proportions of impressive scale with wide oak floors that flow through the welcoming entrance hall to a light-filled dining area and state of the art gourmet kitchen boasting stone benches and Miele appliances. The expansive living area opens fully to a private landscaped north-facing garden with large entertaining deck. A beautiful downstairs main bedroom with built in robe and en-suite sets a standard of luxury that is matched upstairs by an additional lavish main bedroom with designer en-suite and built in robe, two additional bedrooms with built in robes, a retreat and stylish bathroom with freestanding bath.

Superbly appointed throughout with heating/cooling, alarm, video intercom, powder-room, laundry and internally accessed garage.

57midlothianstreet-malverneast.com

4  3  2 

Auction Saturday 9th December at 12.30pm

Daniel Wheeler 0411 676 058

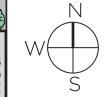
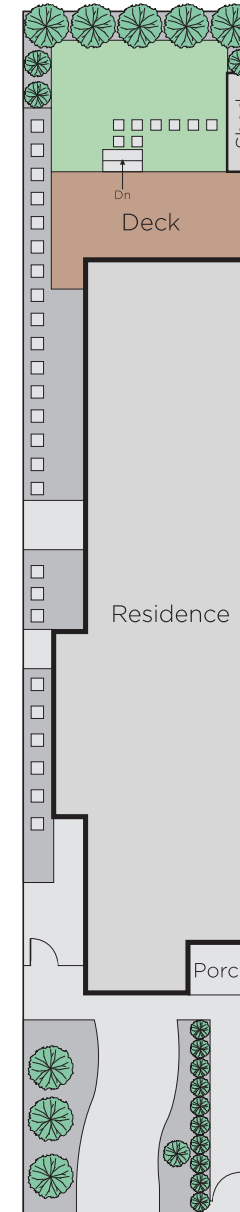
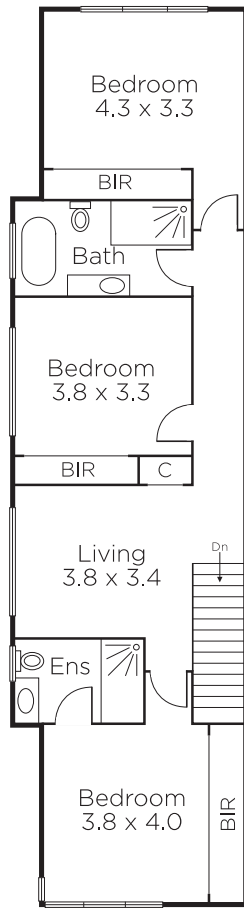
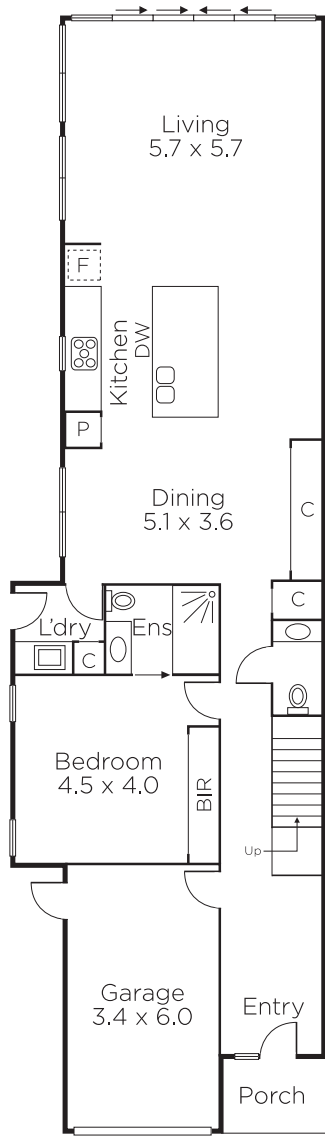
Clare Moloney 0401 546 441

Justin Krongold 0403 163 355

1111 High Street Armadale

marshallwhite.com.au


MARSHALLWHITE



Disclaimer: Information provided is believed to be accurate as at the date of printing, no responsibility is taken for any errors or omissions. It is your responsibility to obtain independent, professional advice. Personal information collected from you is for security purposes and to contact you should the property sell prior to auction. We may use this information to provide you with other real estate services including referrals to authorised financial services' providers. Visit our website at www.marshallwhite.com.au for our privacy policy.