




MARSHALLWHITE

568 Orrong Road
Armadale



Captivating Edwardian, Coveted Locale

Enviably situated near schools, High St shops & trams & Orrong Park, the impressive proportions & exquisite elegance that define this classic Edwardian residence highlight its instant family appeal and its scope for further improvement (STCA). Baltic pine floors flow through the wide hall to 3 double bedrooms with OFP, a 4th bedroom, family bathroom & formal dining room with marble fireplace. Vaulted ceilings accentuate the scale of the living/dining room with open fire & superb marble kitchen opening to a private northeast garden. Includes laundry, 2nd toilet & 3 off street parking. Land size: 546sqm (approx.)

4 1 3

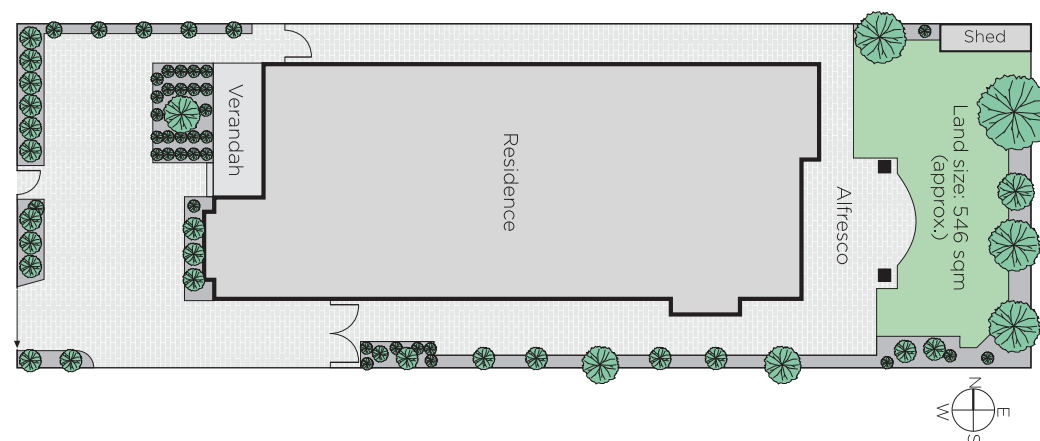
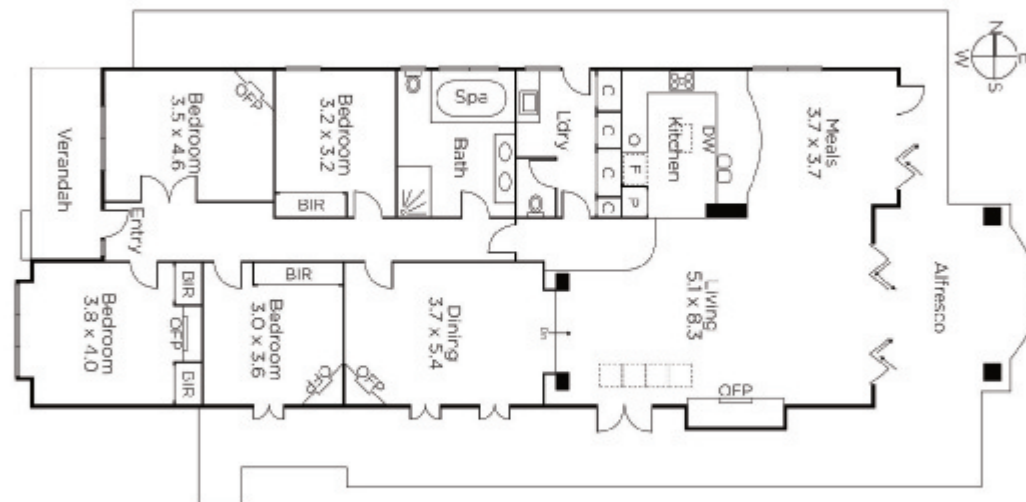
Auction Saturday 20th October at 11.30am

Dean Gilbert
0418 994 939

James McCormack
0410 503 389


MARSHALLWHITE

1111 High Street, Armadale



Disclaimer: Information provided is believed to be accurate as at the date of printing, no responsibility is taken for any errors or omissions. It is your responsibility to obtain independent, professional advice. Personal information collected from you is for security purposes and to contact you should the property sell prior to auction. We may use this information to provide you with other real estate services including referrals to authorised financial services providers. Visit our website at www.marshallwhite.com.au for our privacy policy.