




MARSHALLWHITE
ONE

5/6 Wando Grove
St Kilda East



Designers' Own Symphony of Light and Space

This huge, three bedroom, designers' own apartment has been comprehensively renovated with no expense spared. With an impressive attention to detail, the home's large kitchen / meals hosts Miele appliances, generous stone benches and even an alcove study, all opening to a spacious lounge / dining with a balcony, whilst the bedrooms each have robes and there are two fully-tiled and vogue bathrooms with under-floor heating. Also offering reverse cycle air conditioning and ducted heating, custom joinery throughout, pure wool carpets, Royal Oak timber flooring and Somfy automated blinds as well as secure intercom entry, two undercover parking spaces and a substantial storage unit. This peaceful leafy streetscape in one of inner-suburban Melbourne's premier positions will reward you with easy access to cafes, a supermarket, city-bound public transport and some pretty local parks.

5-6wandogrove-stkildaeast.com

3 1.5 2

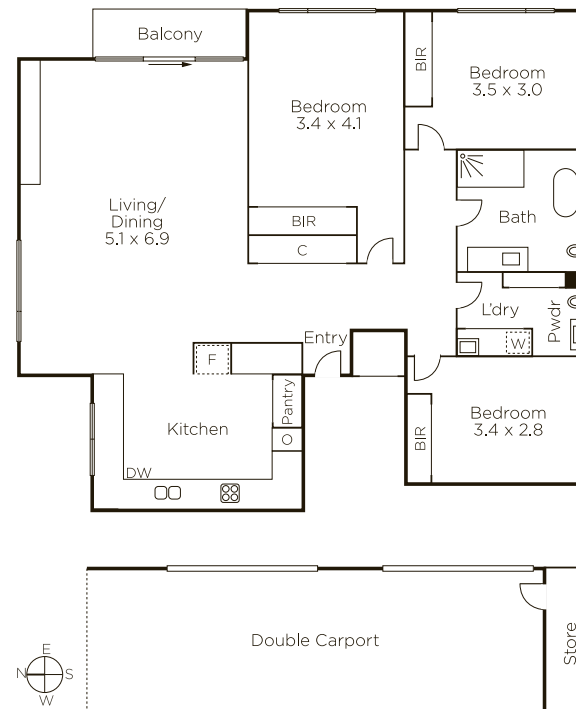
Auction Saturday 3rd March at 9.30am

Joseph Ben-Danan 0408 135 948

Matthew Grima 0403 438 601

1111 High Street Armadale

9822 9999 mwone.com.au



MARSHALLWHITE
ONE

Disclaimer: Information provided is believed to be accurate as at the date of printing, no responsibility is taken for any errors or omissions. It is your responsibility to obtain independent, professional advice. Personal information collected from you is for security purposes to contact you should the property sell prior to auction. We may use this information to provide you with other real estate services including referrals to authorized financial services providers. Visit our website at www.mwone.com.au for our privacy policy.