




MARSHALLWHITE
ONE

5/6 Arnott Street
Mont Albert North



A Peaceful Lifestyle with Reserve Outlooks

This appealing single level villa unit, one of only six is privately and securely positioned to the rear of the complex and surrounded by lush, established gardens providing an attractive entry to the property itself as well as a rear aspect overlooking the leafy Gawler Chain Reserve. The interior features a combined sitting and dining room, stylish kitchen equipped with Blanco and Bosch stainless steel appliances plus beautiful blond timber benchtops opening to a wide deck and wrap around gardens providing loads of space for relaxation and casual dining where entertaining will be a joy. Plus two good-sized bedrooms with BIRs, bathroom with a separate WC and laundry. Other features include alarm, gas ducted split-system all rooms, double garage, solar panels and visitor parking.

2 1 2

Auction Saturday 14th September at 10.30am

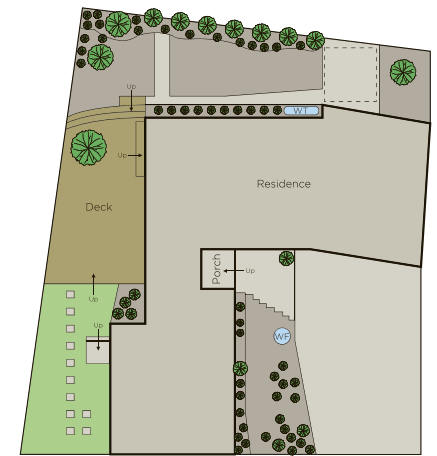
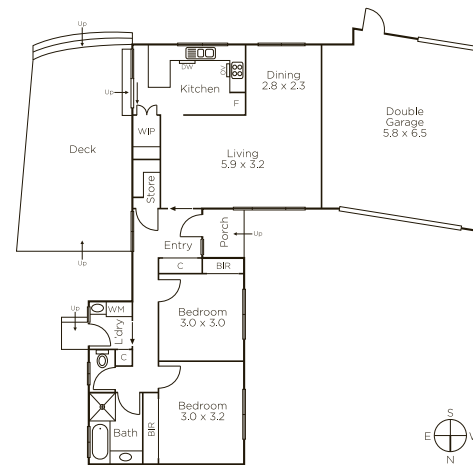
Kane Penhalluriack 0406 556 445

Hamish Tostevin 0408 004 766

Samantha Paterson 0417 137 721

801 Glenferrie Road Hawthorn

9822 9999 mwone.com.au



MARSHALLWHITE
ONE

Disclaimer: Information provided is believed to be accurate as at the date of printing, no responsibility is taken for any errors or omissions. It is your responsibility to obtain independent, professional advice. Personal information collected from you is for security purposes to contact you should the property sell prior to auction. We may use this information to provide you with other real estate services including referrals to authorized financial services providers. Visit our website at www.mwone.com.au for our privacy policy.