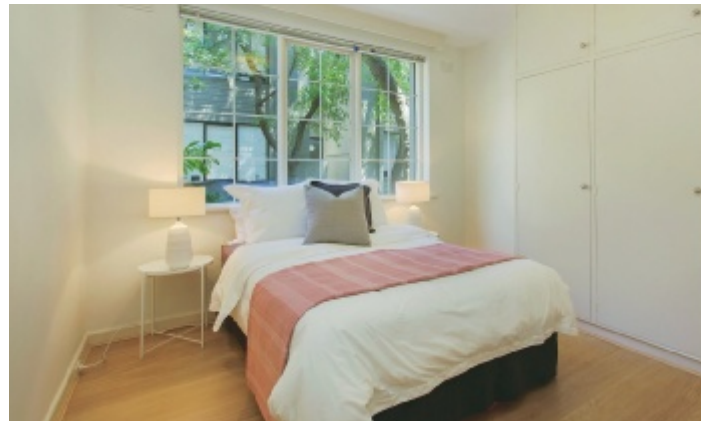




MARSHALLWHITE  
ONE

5/6-8 Avondale Road  
Armadale





## Refurbished Armadale Tranquility

Beautifully set amidst lush established trees, this pristine, one bedroom, ground-floor apartment enjoys leafy outlooks and a peaceful, rear-of-the-block position, making it a perfect retreat from all the nearby action of this premier urban position.

Nicely refurbished with new floors and freshly painted throughout, the home features an attractive kitchen with timber cabinetry, a bright lounge / dining with a pretty garden backdrop, robes in the bedroom and a huge bathroom. Rear parking and secure intercom entry are important offerings in this appealing block that also has communal laundry facilities.

A quiet street in a dynamic position is the ideal situation for this lifestyle pad or investment which is convenient to High St, Hawksburn Village, Malvern Central Shopping Centre and Chapel St as well as all modes of transport.

5-6-8avondaleroad-armadale.com



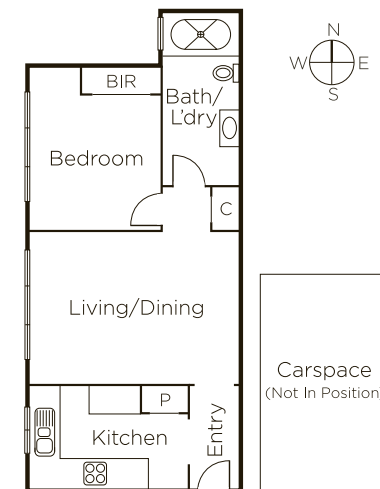
Auction Saturday 24th February at 12.30pm

Matt Giulieri 0407 851 206

1111 High Street Armadale

Jack Nicol 0400 774 428

9822 9999 mwone.com.au



  
MARSHALLWHITE  
ONE

Disclaimer: Information provided is believed to be accurate as at the date of printing, no responsibility is taken for any errors or omissions. It is your responsibility to obtain independent, professional advice. Personal information collected from you is for security purposes to contact you should the property sell prior to auction. We may use this information to provide you with other real estate services including referrals to authorized financial services providers. Visit our website at [www.mwone.com.au](http://www.mwone.com.au) for our privacy policy.