

MONASH FWY

SCOTCH COLLEGE

CBD

YARRA RIVER

FAIRVIEW PARK



MARSHALLWHITE
ONE

5/474 Glenferrie Road
Hawthorn



Lavish Al fresco Entertainers' Oasis

With extraordinary indoor-outdoor living and entertaining, this large, two bedroom, first floor apartment is a home of unquestionable quality and tastefully enduring designer style, in a surprisingly peaceful position, well removed from the street on Scotch Hill. Flowing delightfully to its enormous and remarkably serene paved courtyard, the open-plan kitchen / meals / living is superbly equipped with stone benches, premium stainless steel appliances and glass splash backs as it presents a joyful al fresco entertainers' paradise. Each of the bedrooms have robes, whilst the bathroom is the epitome of good taste with stone benches and glass splash backs that are themed to the kitchen, plus there is secure video entry, elevator access and parking to complete the picture of security and convenience. Just moments from shops, cafes and restaurants, you will enjoy the convenience of trams as well as the beauty of Yarra trails and Gardners Creek.

5-474glenferrieroad-hawthorn.com

2 1 1

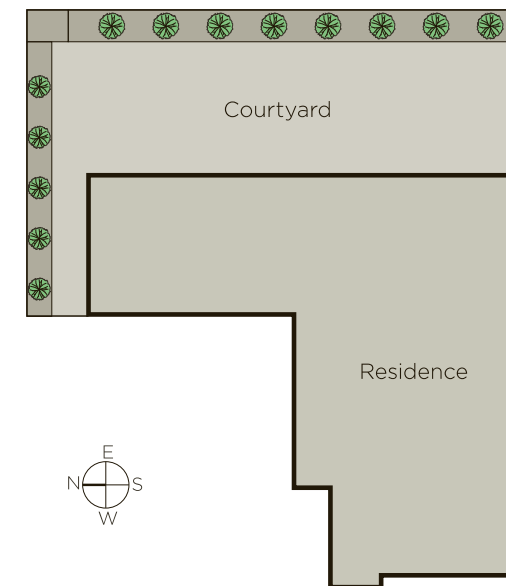
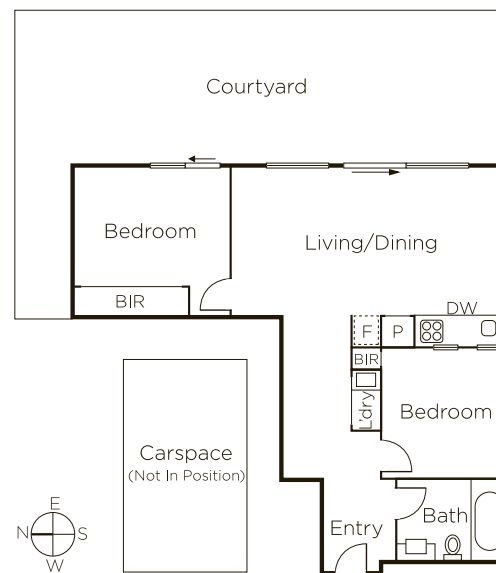
Private Sale

Luke Saville 0437 720 806

Doug McLauchlan 0418 377 718

801 Glenferrie Road Hawthorn

9822 9999 mwone.com.au




MARSHALLWHITE
ONE

Disclaimer: Information provided is believed to be accurate as at the date of printing, no responsibility is taken for any errors or omissions. It is your responsibility to obtain independent, professional advice. Personal information collected from you is for security purposes to contact you should the property sell prior to auction. We may use this information to provide you with other real estate services including referrals to authorized financial services' providers. Visit our website at www.mwone.com.au for our privacy policy.