



  
MARSHALLWHITE

553 South Road  
Bentleigh



## Tailormade for Today and Ideal for the Future

Renovated and close to schools and transport, this single level light-filled home is perfect for now & exciting for the future STCA. Every room & outdoor space is updated, and you can walk to Tucker Rd Bentleigh Primary School and Moorabbin trains and shops in minutes. Open-plan living opens onto a north-facing garden, ideal for relaxing on the deck & enjoying the sunshine. Single-level design offers three bedrooms & three bathrooms, kitchen with stainless steel appliances, & a double garage with scope to create self-contained living STCA. Excellent long-term potential on 604 sqm with a 17-metre frontage approx.

[553southroad-bentleigh.com](http://553southroad-bentleigh.com)

3 3 2

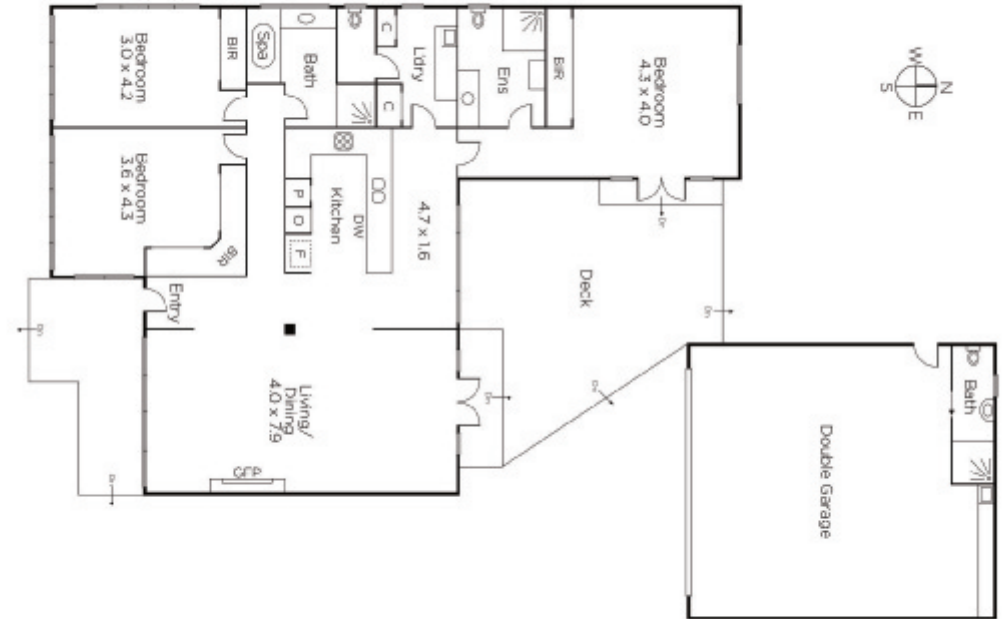
Auction Saturday 12th May at 10.30am

**Kate Fowler**  
0418 418 385

**Robin Parker**  
0409 336 282

  
**MARSHALLWHITE**

225 Bay Street, Brighton



Disclaimer: Information provided is believed to be accurate as at the date of printing, no responsibility is taken for any errors or omissions. It is your responsibility to obtain independent, professional advice. Personal information collected from you is for security purposes and to contact you should the property sell prior to auction. We may use this information to provide you with other real estate services including referrals to authorised financial services providers. Visit our website at [www.marshallwhite.com.au](http://www.marshallwhite.com.au) for our privacy policy.