



  
MARSHALLWHITE  
ONE

5/402 Whitehorse Road  
Surrey Hills



## Bright and Timeless, Older-Style Chic

This light-filled, large two bedroom, mid 20th Century apartment is in a wonderful position on the cusp of Balwyn Village. It has been tastefully renovated to combine both aesthetics and functionality. Huge full-width windows introduce floods of natural light and a sense of older-style chic to a lounge/dining room that opens to the home's balcony and also flows to a semi-attached gourmet kitchen in which CaesarStone benches complement a stainless steel 900mm Emilia oven/cooktop, Bosch dishwasher and volumes of premium soft close cabinetry. Also features huge customised built-in robes in each bedroom, a vogue bathroom with a frameless screened shower, plus wall panel heating and split system cooling. From this vibrant and highly convenient position, you can easily walk to strip shopping, cafes, Beckett Park and Maranoa Gardens and to the Palace Cinema, whilst the tram along Whitehorse Rd can have you in the city with minimal fuss.

5-402whitehorseroad-surreyhills.com 2 1

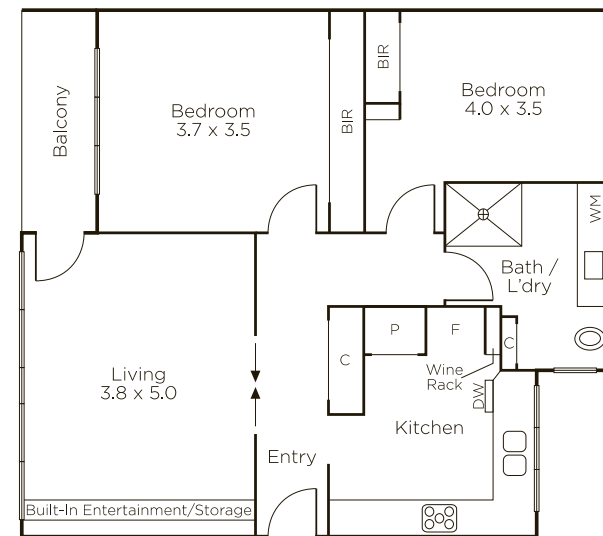
Auction Saturday 7th September at 2pm

James Hill 0402 421 154

Ash Sachdev 0402 425 661

801 Glenferrie Road Hawthorn

9822 9999 mwone.com.au



  
MARSHALLWHITE  
ONE

Disclaimer: Information provided is believed to be accurate as at the date of printing, no responsibility is taken for any errors or omissions. It is your responsibility to obtain independent, professional advice. Personal information collected from you is for security purposes to contact you should the property sell prior to auction. We may use this information to provide you with other real estate services including referrals to authorized financial services providers. Visit our website at [www.mwone.com.au](http://www.mwone.com.au) for our privacy policy.