



MARSHALLWHITE

54 Wheatland Road
Malvern





Exquisite Edwardian Elegance

This distinguished solid brick c1910 Edwardian residence delivers instant family appeal and magnificently occupies a substantial corner allotment in a prized leafy pocket, further highlighted by elaborate period features and generous family proportions. Establishing a wonderful sense of grandeur, the majestic arched central hall features ultra high ornate ceilings and beautiful leadlight windows. The impressive scale is continued through the gracious sitting room with open fireplace. Timber floors flow through the generous casual living room (OFP), dining area (OFP) and the superbly appointed modern kitchen opening out to a private leafy garden with solar heated pool. The main bedroom with en-suite and built in robe, two additional double bedrooms with marble open fireplaces and a second bathroom are downstairs. A fabulous children's zone upstairs comprises two bright bedrooms with built in robes, a retreat and 3rd bathroom. Desirably situated walking distance to Glenferrie Rd shops and restaurants, Malvern station, Malvern primary and trams, it also features alarm, laundry, ample storage, irrigation, off street parking and a double garage. Land size: 918sqm approx.

54wheatlandroad-malvern.com

5  3  4 

Auction Saturday 24th February at 3.30pm

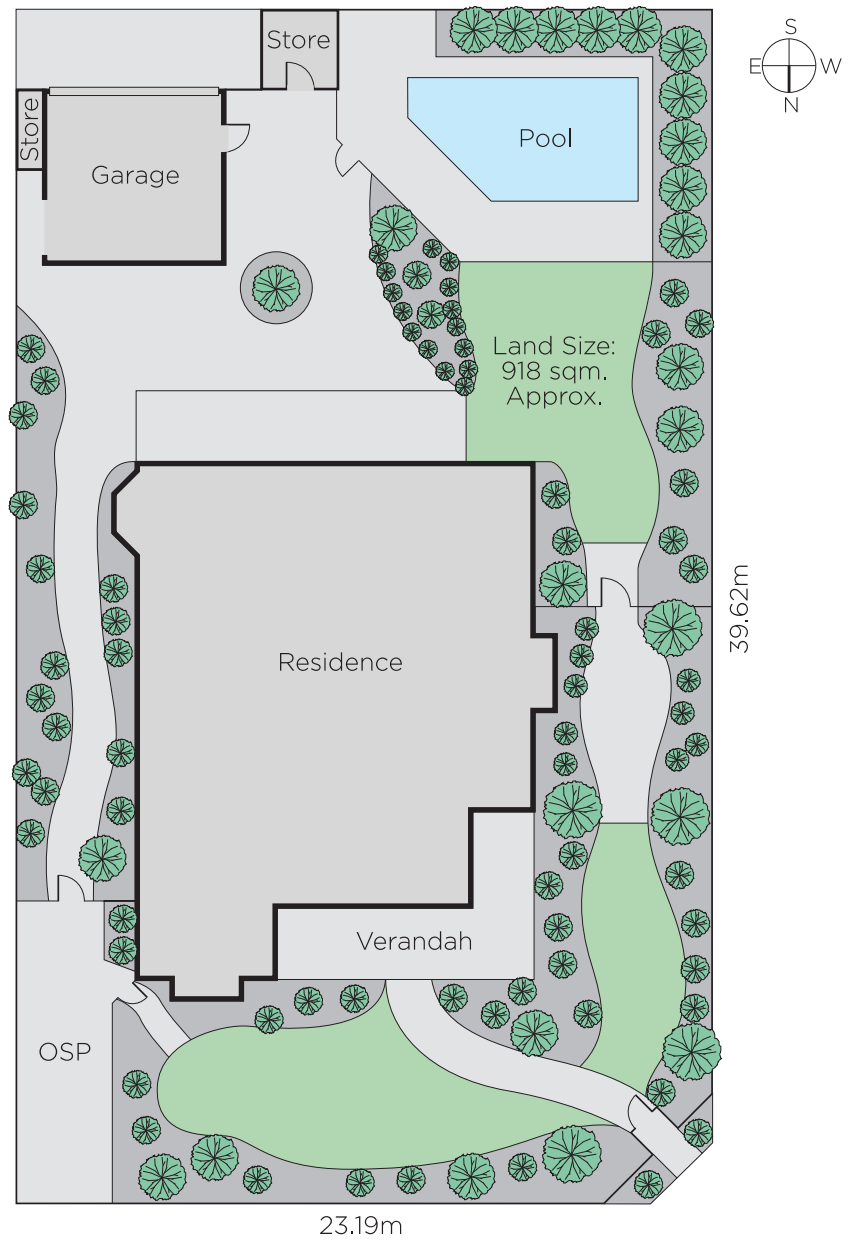
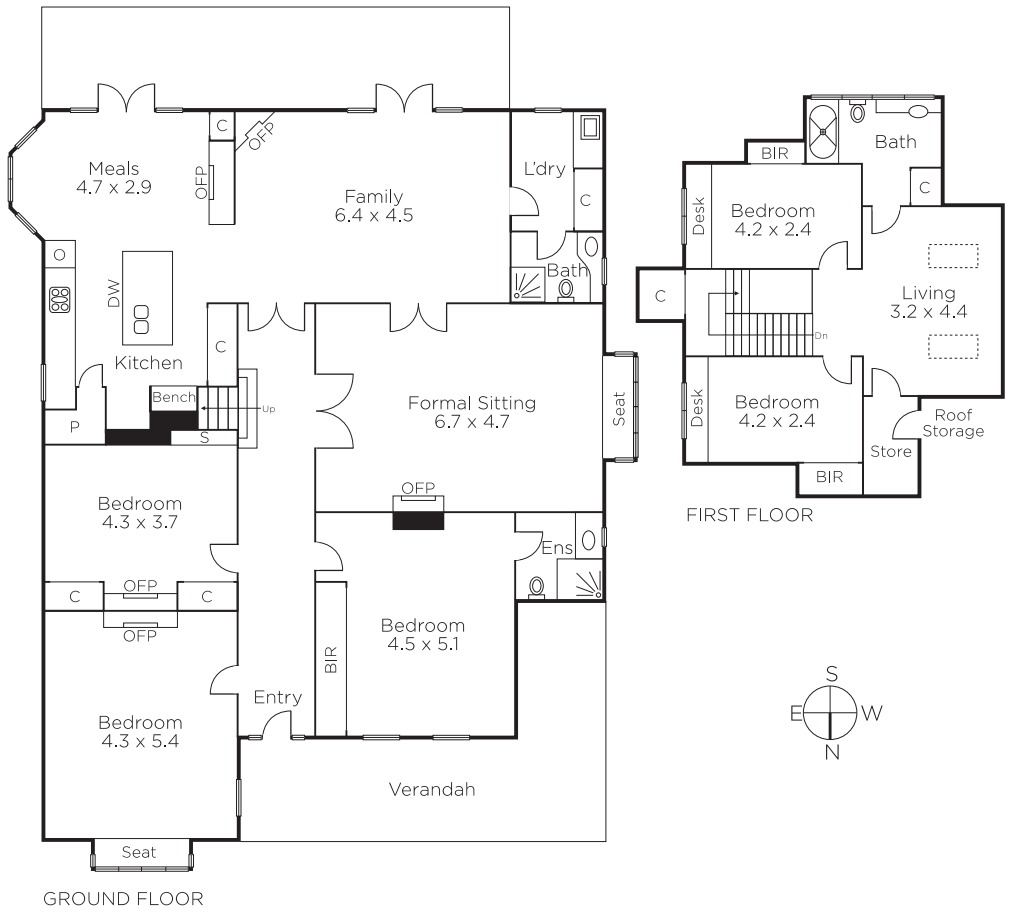
Daniel Wheeler
0411 676 058

James Tostevin
0417 003 333

Justin Krongold
0403 163 355


MARSHALLWHITE

1111 High Street, Armadale



Disclaimer: Information provided is believed to be accurate as at the date of printing, no responsibility is taken for any errors or omissions. It is your responsibility to obtain independent, professional advice. Personal information collected from you is for security purposes and to contact you should the property sell prior to auction. We may use this information to provide you with other real estate services including referrals to authorised financial services' providers. Visit our website at www.marshallwhite.com.au for our privacy policy.