



MARSHALLWHITE

54 Shepherd Street  
Surrey Hills





## Modern Living Meets Period Charm

Enviably located within walking distance of Wattle Park and Golf Course, the generous dimensions of the home offer convenience and options for a busy lifestyle. Modern timber floors flow through to dining and formal lounge while a decked atrium introduces light throughout. With second causal living, the home is further enhanced with fireplace and open plan kitchen served by Miele appliances and stone bench tops. Light filled master bedroom inc. ensuite + WIR, while two additional bedrooms and study share a family bathroom inc. a corner spa and separate shower. In Conjunction with Collins Simms.

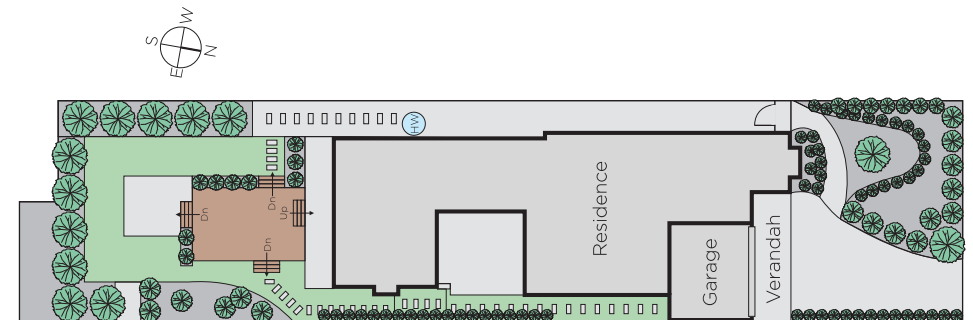
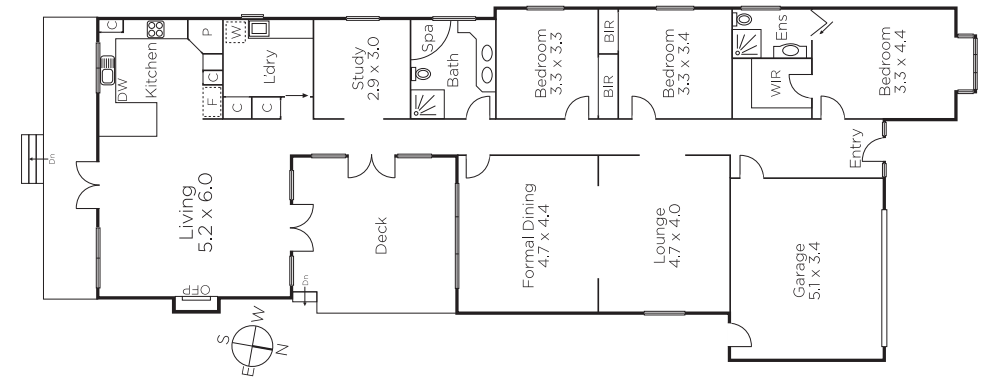
3 2 2

Auction Saturday 18th August at 11.30am

**Antony Woodley**  
0421 286 741

**Kathy Malcolm**  
0416 279 966

**Stuart Evans**  
0402 067 710



**MARSHALLWHITE**

801 Glenferrie Road, Hawthorn

Disclaimer: Information provided is believed to be accurate as at the date of printing, no responsibility is taken for any errors or omissions. It is your responsibility to obtain independent, professional advice. Personal information collected from you is for security purposes and to contact you should the property sell prior to auction. We may use this information to provide you with other real estate services including referrals to authorised financial services providers. Visit our website at [www.marshallwhite.com.au](http://www.marshallwhite.com.au) for our privacy policy.