



366


MARSHALLWHITE
ONE
5/366 Church Street
Richmond



Alfresco Living in the Richmond Hill Precinct

Enjoy a fabulous inner city lifestyle with this cutting edge alfresco style apartment located in the heart of Richmond Hill. This ultra-stylish ground floor, two bedroom apartment is the very best of Richmond Hill living. Striking timber floors and high concrete ceilings impress on the inside, with the expansive outdoor space perfect for entertaining. Full windows in the relaxed living and dining zone give you views out to a leafy courtyard and deck (66sqm approx.). Both bedrooms feature BIRs, while the well-appointed bathroom includes a European laundry. Other features include study area with desk, ducted heating and cooling, video intercom entry, irrigation system in garden, storage cage, and a secure basement car space (not a car stacker). You have so much at your fingertips with this amazing Richmond Hill location, with shops, cafés, bars and nightlife, trains, trams, parks and almost every other imaginable amenity at the doorstep.

5-366churchstreet-richmond.com



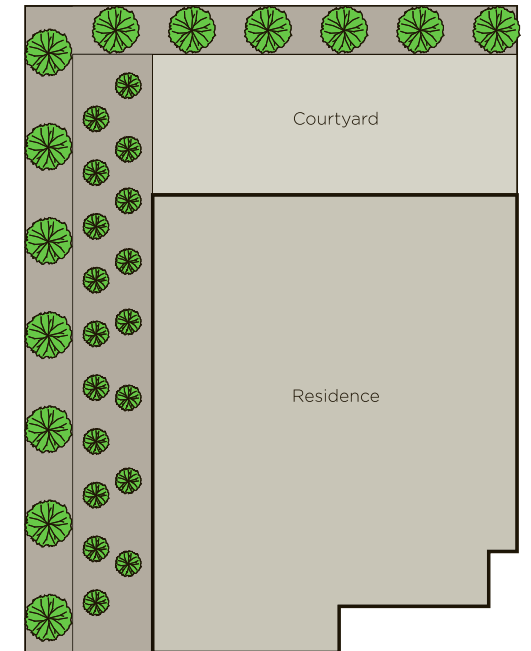
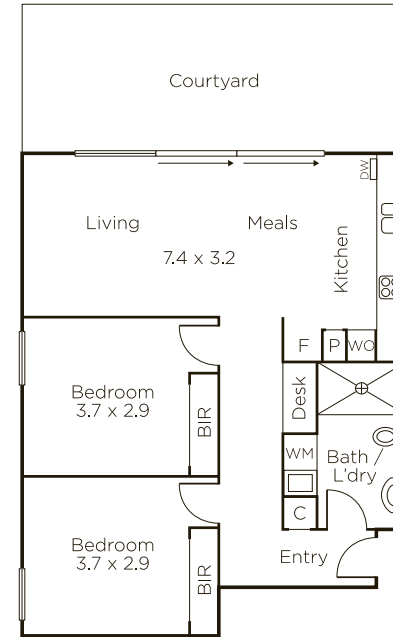
Auction Saturday 3rd August at 12.30pm

James Hill 0402 421 154

Tori McGregor 0400 633 992

801 Glenferrie Road Hawthorn

9822 9999 mwone.com.au



MARSHALLWHITE
ONE

Disclaimer: Information provided is believed to be accurate as at the date of printing, no responsibility is taken for any errors or omissions. It is your responsibility to obtain independent, professional advice. Personal information collected from you is for security purposes to contact you should the property sell prior to auction. We may use this information to provide you with other real estate services including referrals to authorized financial services providers. Visit our website at www.mwone.com.au for our privacy policy.