



  
MARSHALLWHITE

536 Tooronga Road  
Hawthorn East





## Premier Location, Loaded with Potential

Rare opportunity for renovators or developers with an eye to the future to renovate & extend this late Edwardian double brick home (STCA) ideally positioned at the top end of Tooronga Road Hill. The property has ample room to extend out & up at the rear, where a 2nd storey would deliver panoramic City skyline views. This attractive home features period attributes & comprises living & dining, 3 bedrooms, renovated all-white bathroom, modern kitchen with Ilve & Dishlex S/S appliances, laundry plus a rear garden with an external studio or office. Incls. d/heating, air-conds, OFPs, r/storage & OSP.

536toorongaroad-hawthorneast.com

3 1 3

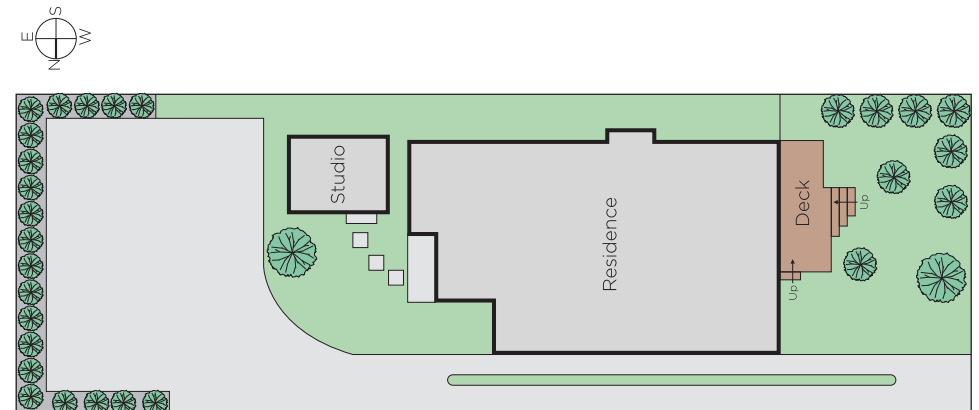
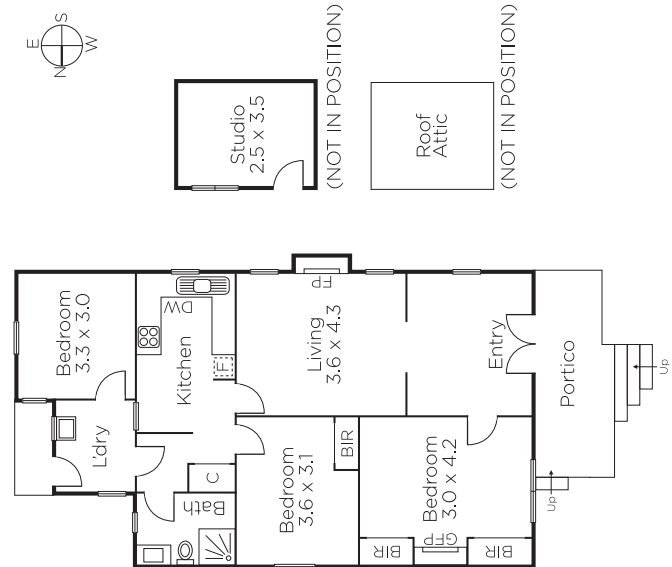
Auction Saturday 18th November at 10.30am

Zali Reynolds 0422 576 049

Todd Braggins 0424 552 238

801 Glenferrie Road Hawthorn  
marshallwhite.com.au

MARSHALLWHITE



Disclaimer: Information provided is believed to be accurate as at the date of printing, no responsibility is taken for any errors or omissions. It is your responsibility to obtain independent, professional advice. Personal information collected from you is for security purposes and to contact you should the property sell prior to auction. We may use this information to provide you with other real estate services including referrals to authorised financial services' providers. Visit our website at [www.marshallwhite.com.au](http://www.marshallwhite.com.au) for our privacy policy.