



MARSHALLWHITE
ONE

5/35 Elphin Grove
Hawthorn



The Perfect Hawthorn Entry or Investment

This refreshing and well-proportioned, two bedroom apartment is a brilliant entry point to the ever-popular streets of Hawthorn or an astute addition to any investment portfolio. Just a gentle stroll from all the vibrancy of Glenferrie Rd and the more relaxed vibe of Auburn Village, this is a zero maintenance home that offers terrific lifestyle credentials and the easiest city access. Set on the first floor of this easy-care block with delightful leafy outlooks and the prize of a coveted parking space, the home features a broad lounge/dining and semi-attached kitchen/meals that has been tastefully refurbished with an eye to functionality. The bedrooms are genuine doubles - one with robes - and the bathroom/laundry is substantial with separate WC, in this home where an effortless urban lifestyle is central to its offering.

5-35elphingrove-hawthorn.com

2 1 1

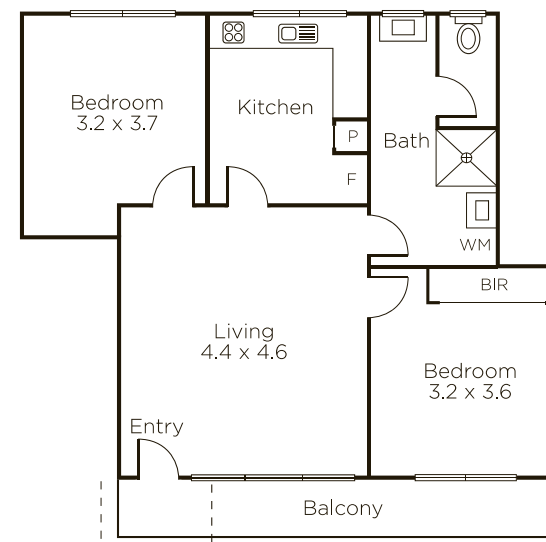
Auction Saturday 22nd June at 10am

Ash Sachdev 0402 425 661

James Hill 0402 421 154

801 Glenferrie Road Hawthorn

9822 9999 mwone.com.au




MARSHALLWHITE
ONE

Disclaimer: Information provided is believed to be accurate as at the date of printing, no responsibility is taken for any errors or omissions. It is your responsibility to obtain independent, professional advice. Personal information collected from you is for security purposes to contact you should the property sell prior to auction. We may use this information to provide you with other real estate services including referrals to authorized financial services providers. Visit our website at www.mwone.com.au for our privacy policy.