




MARSHALLWHITE

5/28 Rockley Road
South Yarra



Timeless Elegance, Exclusive Location

Serenely set at the rear of a leafy boutique enclave of just 5, this inviting residence delivers contemporary lifestyle appeal walking distance to Toorak Rd's shops and restaurants, trams, Como cinemas and Rockley Gardens. Bathed in northern light, the exceptionally spacious living/dining room and modern kitchen open to a large deck and north-facing garden. The generous main bedroom with north balcony, walk in robe and en-suite is on the level above alongside a second bedroom with built in robe and bathroom. Includes security intercom, powder-room, laundry, store-room and internally accessed double garage.

5-28rockleyroad-southyarra.com

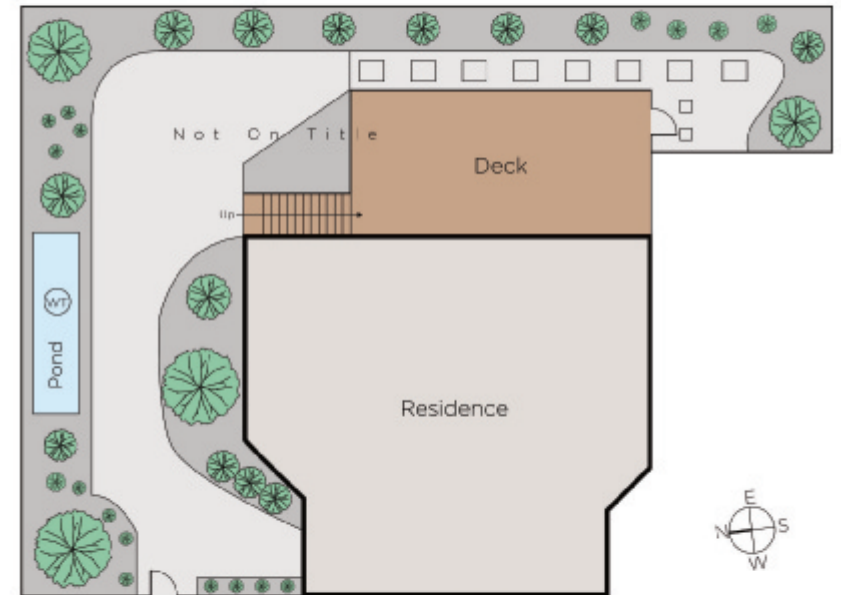
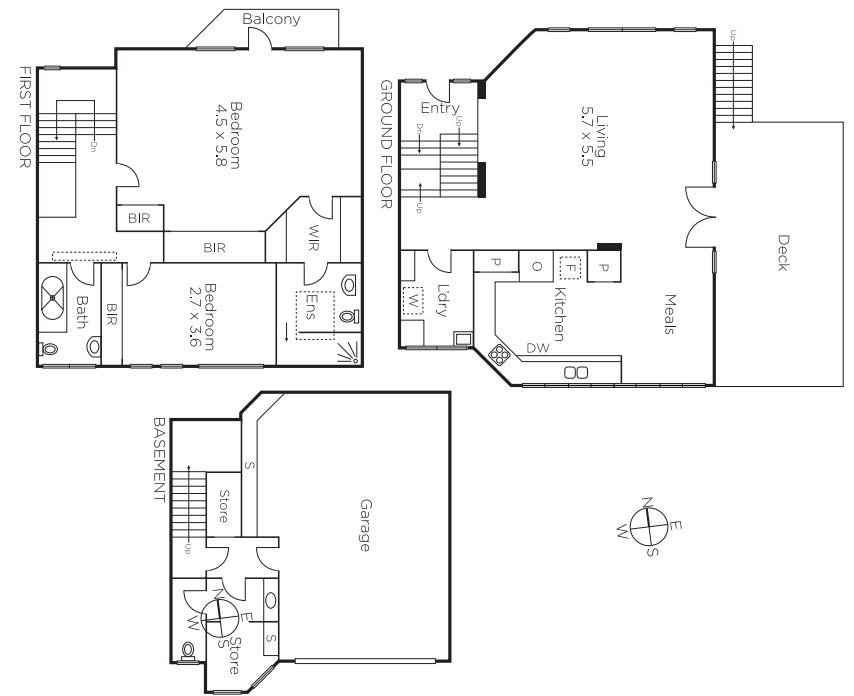
2 2 2

Auction Saturday 23rd June at 10.30am

Susan McGlashan
0417 554 224

Dean Gilbert
0418 994 939

James McCormack
0410 503 389



MARSHALLWHITE

1111 High Street, Armadale

Disclaimer: Information provided is believed to be accurate as at the date of printing, no responsibility is taken for any errors or omissions. It is your responsibility to obtain independent, professional advice. Personal information collected from you is for security purposes and to contact you should the property sell prior to auction. We may use this information to provide you with other real estate services including referrals to authorised financial services providers. Visit our website at www.marshallwhite.com.au for our privacy policy.