



  
MARSHALLWHITE

524 Burwood Road  
Hawthorn



## Enticing Charm, Enviably Lifestyle

A stunning oasis amidst a fabulous array of cafes, restaurants and shops as well as "Rocket Park" and Auburn station, this enchanting single level Edwardian residence's blend of period charm and contemporary style delivers sensational lifestyle rewards. The exquisite fretwork in the wide hallway makes a wonderful first impression as do the high ceilings and timber floors in the sitting room/3rd bedroom with open fire and two spacious bedrooms with a stylish bathroom. The generous living/dining room and modern kitchen open to a private decked garden. Includes pull down attic storage, Euro-laundry and shed.

3 1

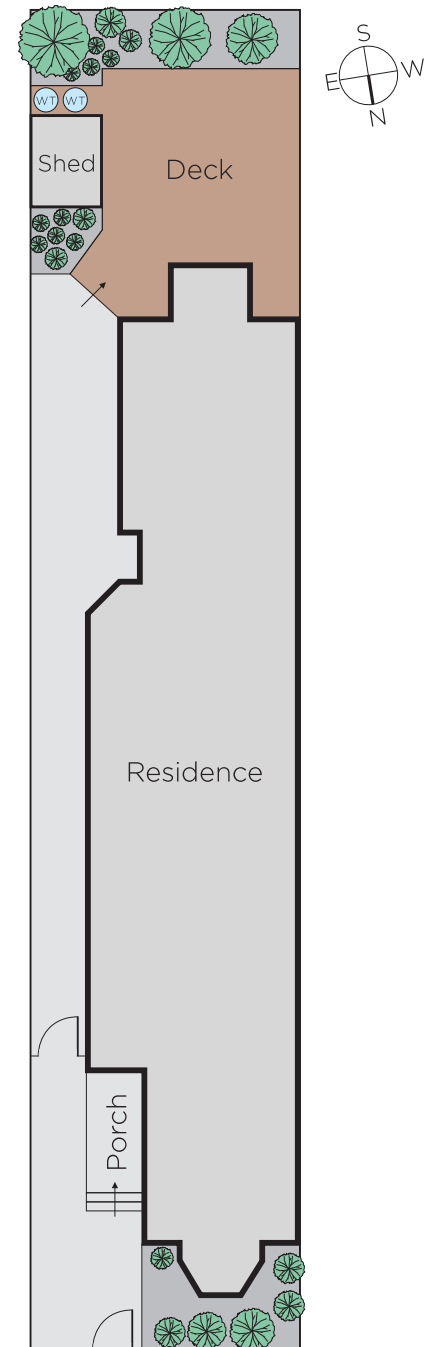
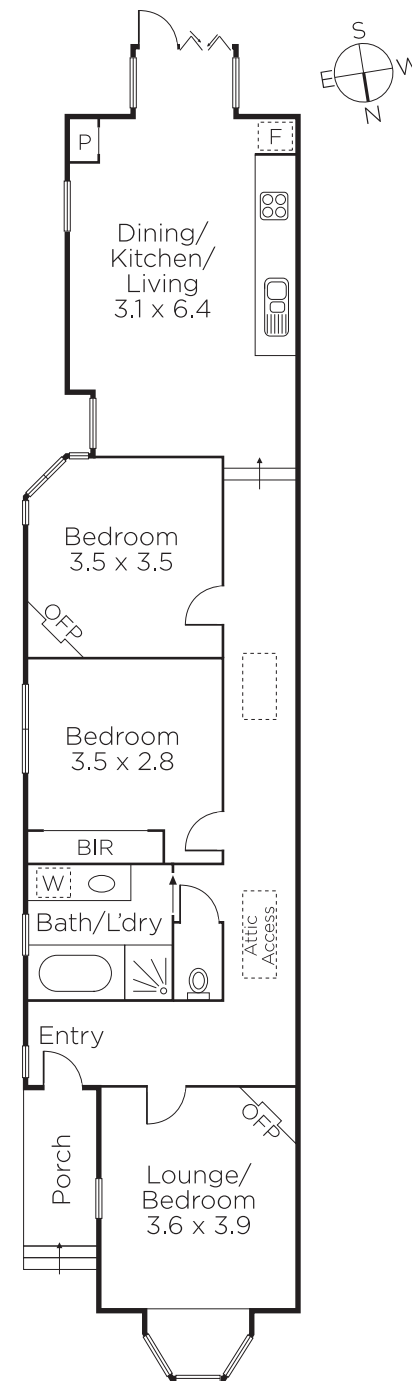
Auction Saturday 27th October at 9.30am

**James Redfern**  
0412 360 667

**Davide Lettieri**  
0414 018 707

  
**MARSHALLWHITE**

1111 High Street, Armadale



Disclaimer: Information provided is believed to be accurate as at the date of printing, no responsibility is taken for any errors or omissions. It is your responsibility to obtain independent, professional advice. Personal information collected from you is for security purposes and to contact you should the property sell prior to auction. We may use this information to provide you with other real estate services including referrals to authorised financial services providers. Visit our website at [www.marshallwhite.com.au](http://www.marshallwhite.com.au) for our privacy policy.