



  
MARSHALLWHITE  
5/22 Broughton Road  
Surrey Hills





## Single Level Serenity in Garden Setting

Desirably situated at the rear of a boutique enclave, the generosity of space and light-filled ambience that define this superb single level residence delivers compelling lifestyle appeal near Union Rd shops, Surrey Hills station, schools and parks. Vaulted ceilings and a northern orientation accentuate the sense of space and light in the spacious living and dining room. The modern kitchen and casual dining area open to a private north garden. The main bedroom with walk in robe is accompanied by a bathroom/en-suite, second double bedroom and study/3rd bedroom. Includes a laundry, shed and oversized double garage.

3 1 3

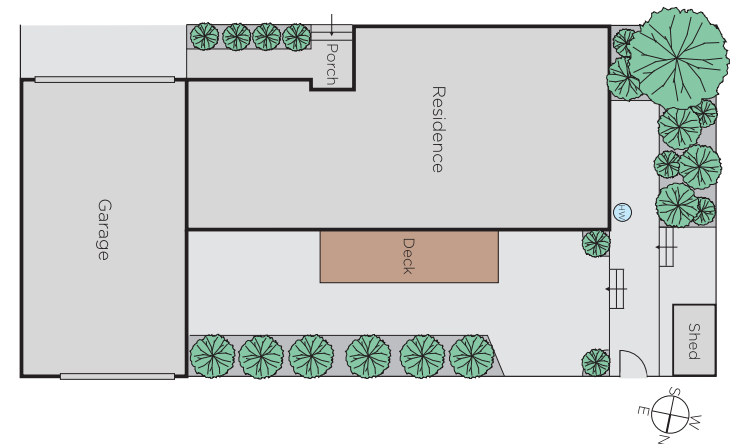
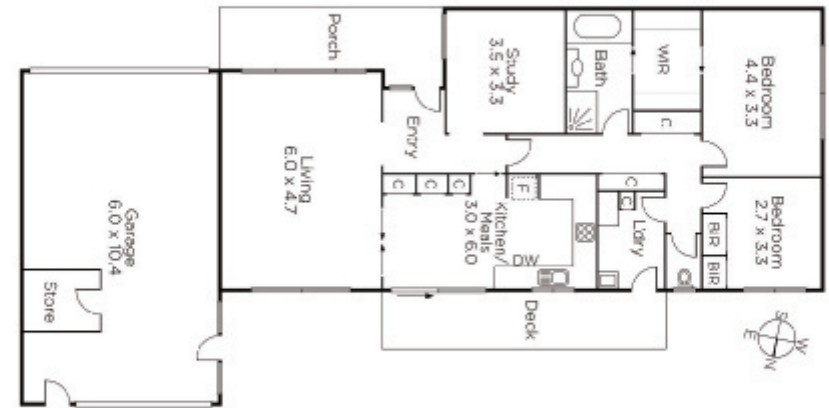
Auction Saturday 21st October at 1pm

Ash Howarth 0415 756 764

Ross Stryker 0401 318 772

801 Glenferrie Road Hawthorn  
[marshallwhite.com.au](http://marshallwhite.com.au)

MARSHALLWHITE



Disclaimer: Information provided is believed to be accurate as at the date of printing, no responsibility is taken for any errors or omissions. It is your responsibility to obtain independent, professional advice. Personal information collected from you is for security purposes and to contact you should the property sell prior to auction. We may use this information to provide you with other real estate services including referrals to authorised financial services' providers. Visit our website at [www.marshallwhite.com.au](http://www.marshallwhite.com.au) for our privacy policy.