




MARSHALLWHITE

5/190 Graham Street
Port Melbourne



The Perfect Port Melbourne Profile

This unique multi level warehouse-style property just two blocks from the beach delivers light filled interiors with city views and a contemporary lifestyle choice with an urban edge. Thoroughly renovated with a stylish new CaesarStone and smeg equipped kitchen, this home offers an impressive living space with double height ceiling and sliding glass to a huge north facing terrace with city glimpses. A generous dining space, laundry and powder room are also on this level. Upstairs two bedrooms and a central bathroom serve in style, the main with excellent CBD views. Secure carport. Zoned for Albert Park College.

5-190grahamstreet-portmelbourne.com

2 1 1

Auction Saturday 14th July at 12.30pm

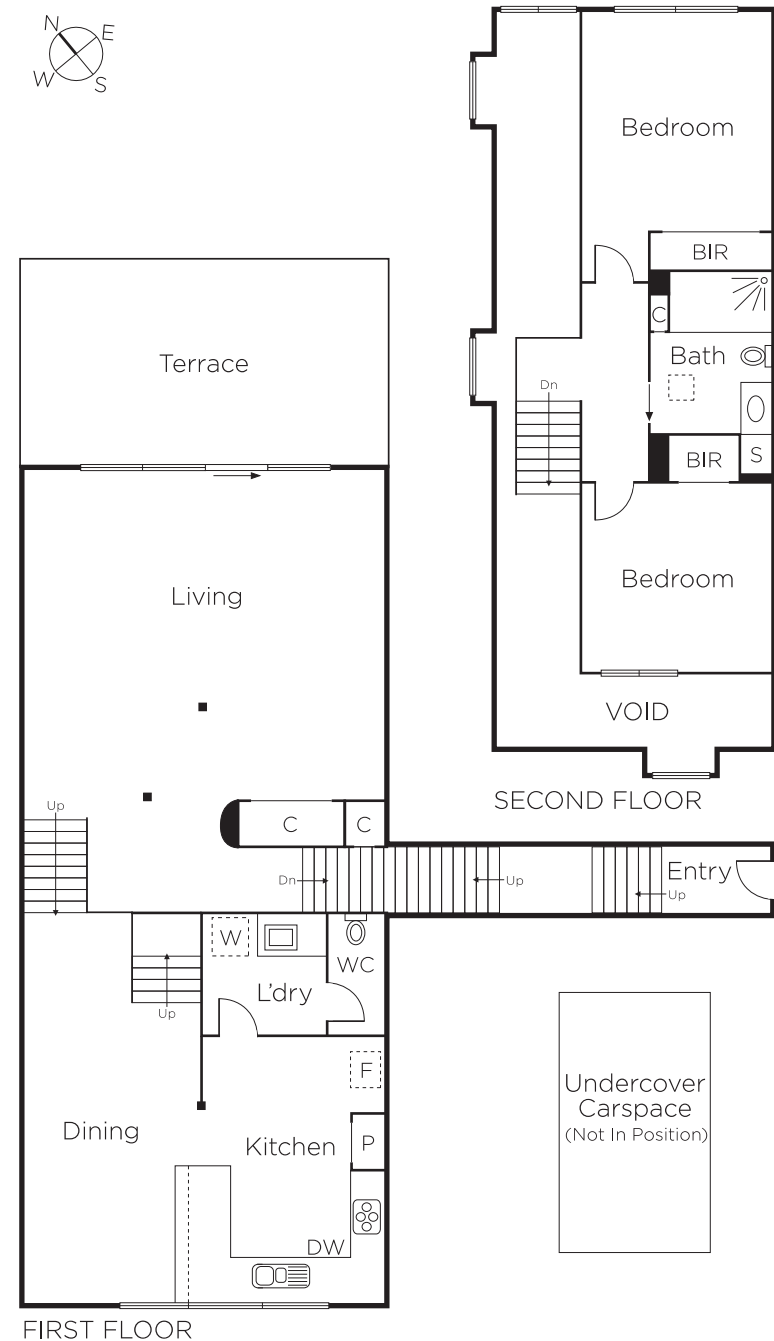
Scott O'Halloran
0413 464 473

Bradley Steinbach
0403 539 038

Damian O'Sullivan
0418 566 916


MARSHALLWHITE

101 Dundas Place, Albert Park



Disclaimer: Information provided is believed to be accurate as at the date of printing, no responsibility is taken for any errors or omissions. It is your responsibility to obtain independent, professional advice. Personal information collected from you is for security purposes and to contact you should the property sell prior to auction. We may use this information to provide you with other real estate services including referrals to authorised financial services providers. Visit our website at www.marshallwhite.com.au for our privacy policy.