




MARSHALLWHITE

516 Burke Road
Camberwell





Timeless Elegance, Prime Location

Reflecting classic Georgian elegance, this luxurious contemporary residence's impressive indoor and outdoor dimensions are equally perfect for lavish entertaining and relaxed family living. Ideal for every stage of family life, it is enviably situated on the corner of Sunnyside Ave close to Camberwell Junction, the Rivoli, trams, parks and schools. The exceptional proportions and finishes are immediately evidenced by the imposing double height reception hall, graciously proportioned formal sitting and dining room and refined study. The superbly appointed gourmet kitchen with marble benches, light-filled living and dining room and adjacent spacious media room open to the deep private landscaped northeast garden. An elegantly curved staircase leads up to a beautiful main bedroom with walk in robe and opulent en-suite with spa-bath, three double bedrooms with built in robe, a large retreat and stylish marble bathroom. Impressively appointed with an alarm, ducted vacuum, powder-room, laundry, wine cupboard and internally accessed double garage accessed from Sunnyside Avenue. Land size: 838sqm (approx.)

516burkeroad-camberwell.com

5 2.5 2

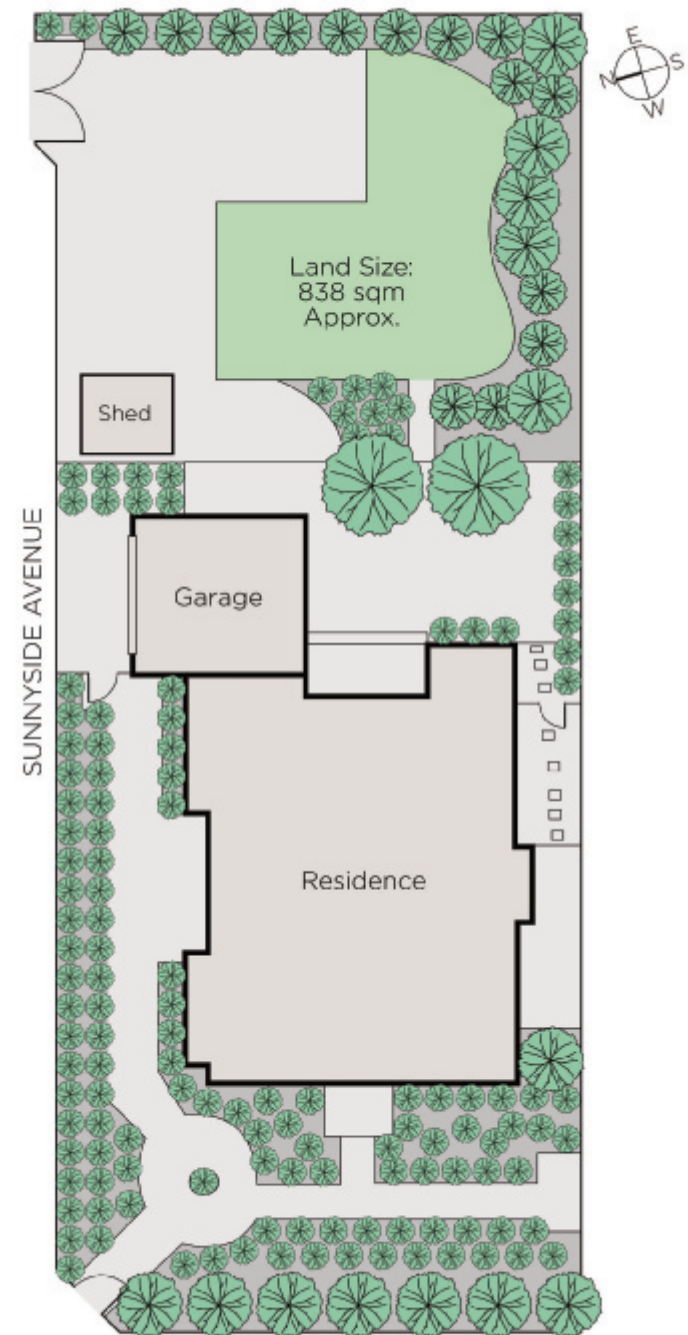
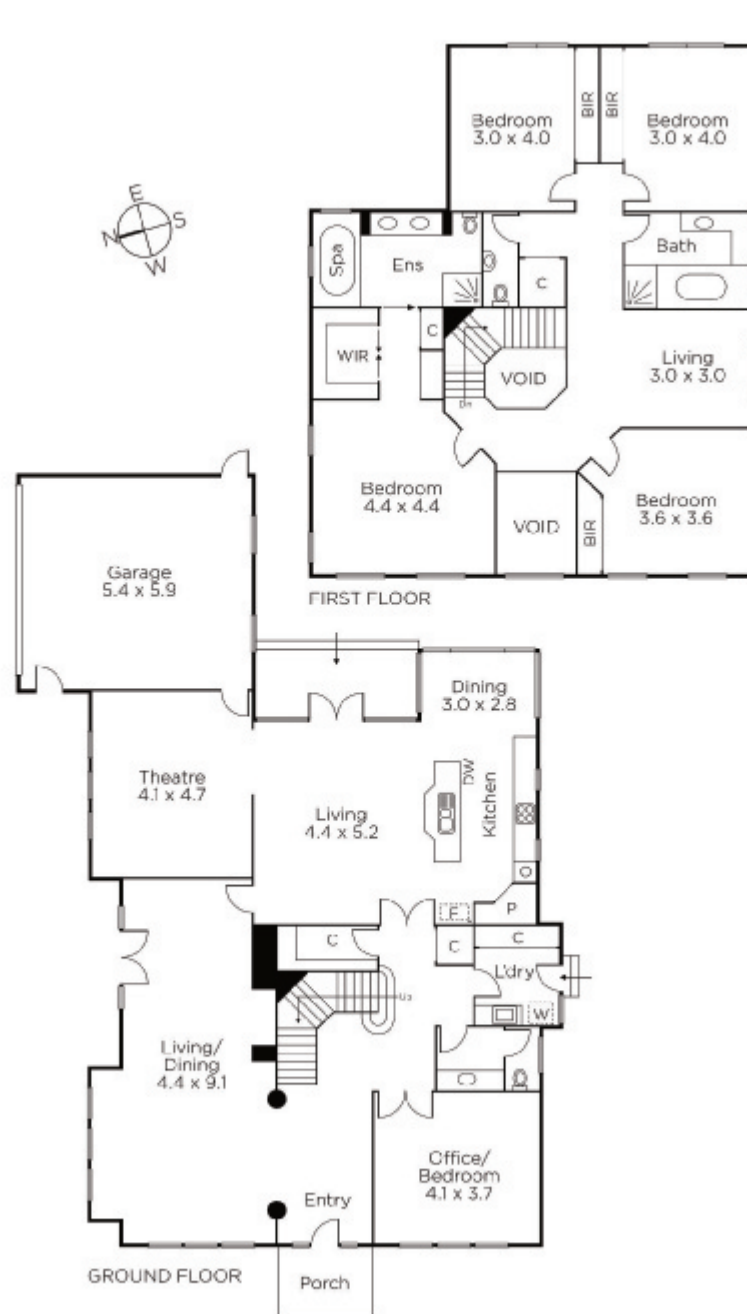
Auction Saturday 3rd March at 12.30pm

Brendan Allen
0499 229 007

Duane Wolowiec
0418 567 581


MARSHALLWHITE

1111 High Street, Armadale



Disclaimer: Information provided is believed to be accurate as at the date of printing, no responsibility is taken for any errors or omissions. It is your responsibility to obtain independent, professional advice. Personal information collected from you is for security purposes and to contact you should the property sell prior to auction. We may use this information to provide you with other real estate services including referrals to authorised financial services' providers. Visit our website at www.marshallwhite.com.au for our privacy policy.