



MARSHALLWHITE
ONE

5/136 Church Street
Hawthorn



Chic Style, Coveted Locale

Clarke Hopkins Clarke designed, ultra-stylish contemporary ground floor apartment delivers exceptional lifestyle appeal just moments from all that Hawthorn and Richmond has to offer. Set at the rear of an exclusive development of only nine, designer flair is highlighted with polished timber floors, floor to ceiling glass and sleek symmetrical lines throughout. A generously proportioned open plan living and dining room enjoys a sun-drenched ambience and is well served by a stunning marble, timber and stainless steel Blanco kitchen. An enticing large private courtyard with deck offers the option of entertaining all year round. The spacious main bedroom is accompanied by a sleek ensuite and walk in wardrobe and is further complemented by a versatile second bedroom (BIR) and a fully tiled designer bathroom. Features include heating/cooling, Euro-laundry, generous storage, security intercom, basement car-space and storage unit.

5-136churchstreet-hawthorn.com

2 2 1

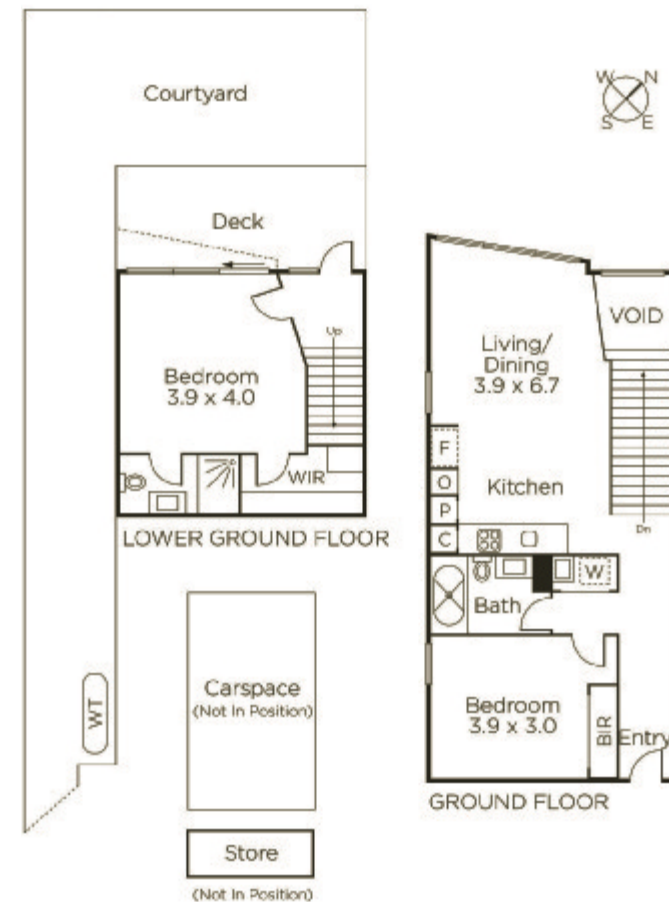
Auction Saturday 28th October at 10.30am

Bethany Wilkinson 0449 285 813

Jack Moss 0439 378 954

801 Glenferrie Road Hawthorn

9822 9999 mwone.com.au



MARSHALLWHITE
ONE

Disclaimer: Information provided is believed to be accurate as at the date of printing, no responsibility is taken for any errors or omissions. It is your responsibility to obtain independent, professional advice. Personal information collected from you is for security purposes to contact you should the property sell prior to auction. We may use this information to provide you with other real estate services including referrals to authorized financial services providers. Visit our website at www.mwone.com.au for our privacy policy.