



16.76m

33.31m

558sqm  
(approx.)

33.26m

16.76m



MARSHALLWHITE

51 Fitzgibbon Crescent  
Caulfield North





## Outstanding Potential in an Exclusive Location

This attractive, well presented brick art-deco family home is enviably located in a quiet & exclusive pocket of North Caulfield. Offering either an exceptional opportunity to further renovate/extend the existing home or a brilliant site for the construction of a luxurious new home (STCA). The present interior features period attributes, living room & adjacent dining room; plus a kitchen opening to a north-facing verandah, external laundry & separate WC, overlooking a sunny, private garden. Brilliantly located close to shops, Caulfield Park, trams, Caulfield station & nearby Dandenong Road for easy access to the CBD.

[51fitzgibboncrescent-caulfieldnorth.com](http://51fitzgibboncrescent-caulfieldnorth.com)

4 1 3

Auction Sunday 20th May at 11.30am

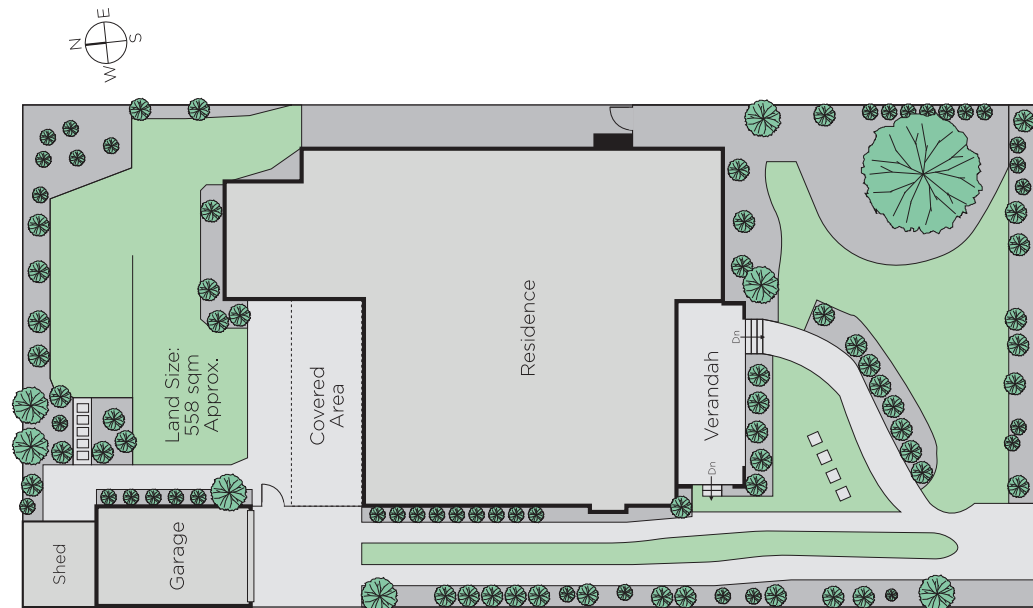
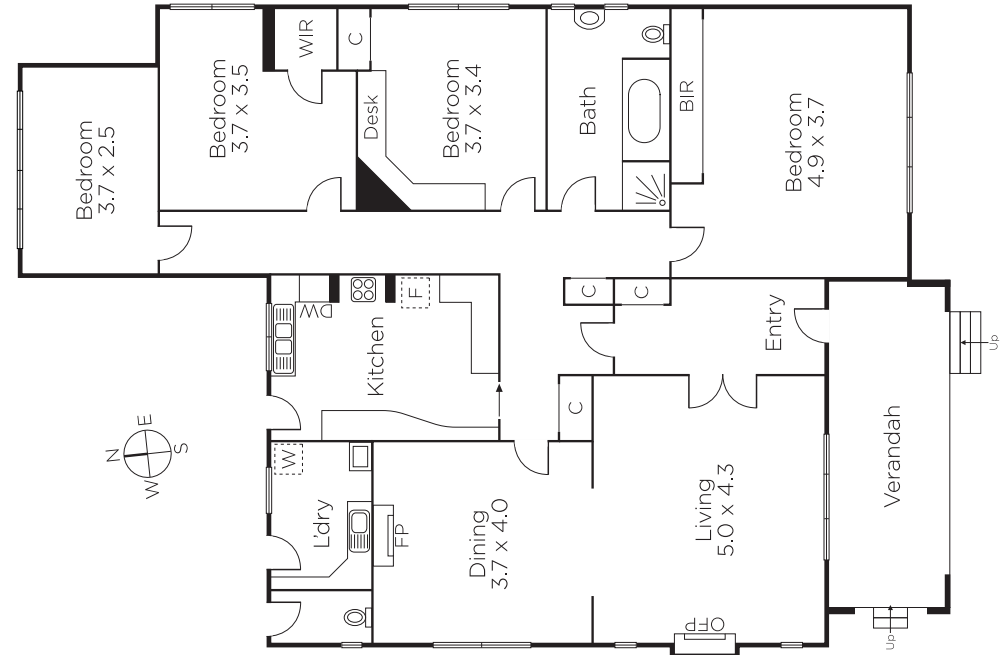
**Hamish Tostevin**  
0408 004 766

**Fiona Ansell-Jones**  
0410 325 240

**Michael Martin**  
0478 011 216

  
**MARSHALLWHITE**

1111 High Street, Armadale



Disclaimer: Information provided is believed to be accurate as at the date of printing, no responsibility is taken for any errors or omissions. It is your responsibility to obtain independent, professional advice. Personal information collected from you is for security purposes and to contact you should the property sell prior to auction. We may use this information to provide you with other real estate services including referrals to authorised financial services providers. Visit our website at [www.marshallwhite.com.au](http://www.marshallwhite.com.au) for our privacy policy.