



MARSHALLWHITE  
ONE

505/9 Eades Street  
East Melbourne





## City-Fringe Excellence with Spectacular Views

Unforgettable in every regard, this immaculate and contemporary, one bedroom, fifth floor residence is well proportioned, light-filled and directly overlooks Fitzroy Gardens, with the city and MCG lights all as a spectacular backdrop. Framing the most captivating views a city pad can offer, the open-plan kitchen / meals / living features stone benches, stainless steel appliances and an appealing flow to a balcony, whilst the bedroom also exposes the city skyline and is equipped with substantial robes. A cleverly designed study nook is a useful inclusion to this home that also features reverse cycle air conditioning, secure intercom entry, basement parking with elevator access and boasting an oversized storage room. It is all here, right at your doorstep. Just a short walk through Fitzroy Gardens takes you either to the CBD or the MCG, where the lifestyle options are virtually endless.

505-9eadesstreet-eastmelbourne.com 1 1 1

Auction Saturday 2nd June at 2.30pm

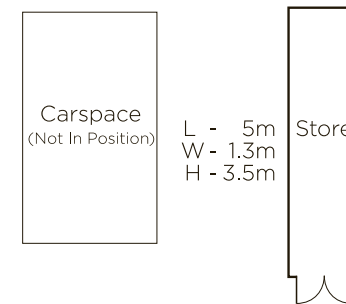
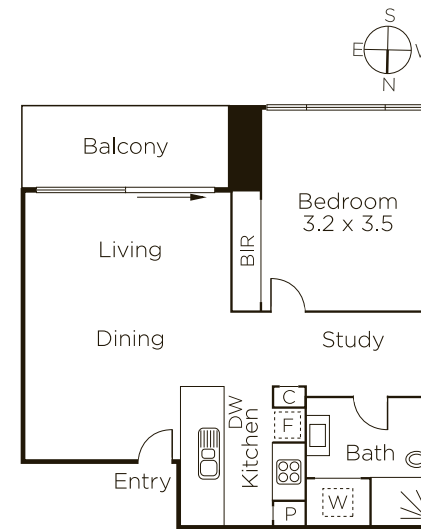
Bradley Steinbach 0403 539 038

Evelyne Ioannou 0425 700 938

Jaymee Ntentis 0478 724 222

101 Dundas Place Albert Park

9822 9999 mwone.com.au



MARSHALLWHITE  
ONE

Disclaimer: Information provided is believed to be accurate as at the date of printing, no responsibility is taken for any errors or omissions. It is your responsibility to obtain independent, professional advice. Personal information collected from you is for security purposes to contact you should the property sell prior to auction. We may use this information to provide you with other real estate services including referrals to authorized financial services providers. Visit our website at [www.mwone.com.au](http://www.mwone.com.au) for our privacy policy.